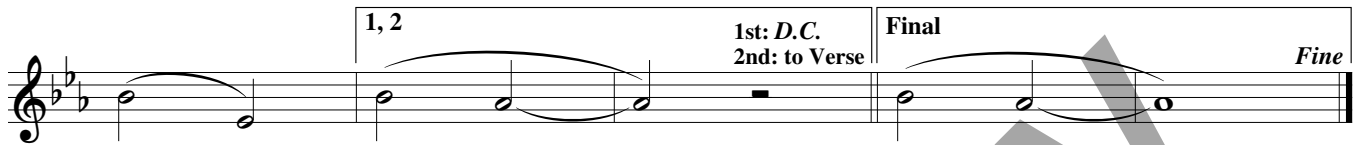


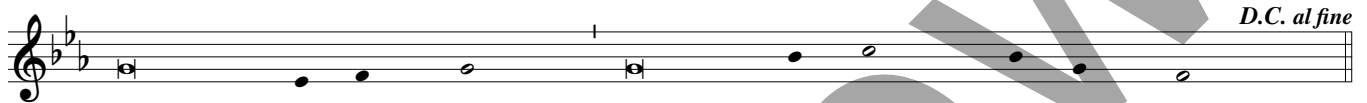
ALLELUIA

SOLO INSTRUMENT in C

REFRAIN: ($\text{♩} = \text{ca. } 90$) 1st time: Cantor/Choir, All repeat; thereafter: All



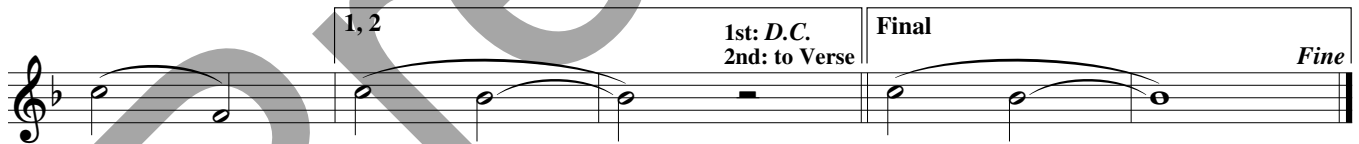
VERSE



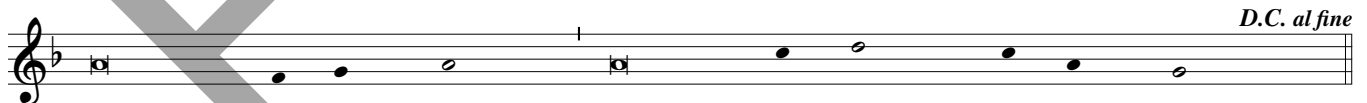
Music: *Mass of the Sacred Heart*; Timothy R. Smith, b. 1960, © 2007, 2010, 2014, Timothy R. Smith. Published by OCP. All rights reserved.

SOLO INSTRUMENT in B \flat

REFRAIN: ($\text{♩} = \text{ca. } 90$) 1st time: Cantor/Choir, All repeat; thereafter: All



VERSE



Music: *Mass of the Sacred Heart*; Timothy R. Smith, b. 1960, © 2007, 2010, 2014, Timothy R. Smith. Published by OCP. All rights reserved.