



OCP MASS SETTINGS / MISAS CANTADAS DE OCP

MASS OF CHRIST THE SAVIOR/ MISA CRISTO SALVADOR

DAN SCHUTTE

ADAPTED BY
JAIME CORTEZ

GUITAR/CHORAL
GUITARRA/CORAL

Mass of Christ the Savior/Misa Cristo Salvador – Guitar/Choral Edition

Dan Schutte

© 2017, OCP

5536 NE Hassalo, Portland, OR 97213

(503) 281-1191 liturgy@ocp.org ocp.org

Excerpts from the English translation of *The Roman Missal* © 2010, International Commission on English in the Liturgy Corporation (ICEL), 1100 Connecticut Ave. NW, Suite 710, Washington, DC 20036-4101. All rights reserved. Used with permission. The English translation of the Alleluia Verses, Gospel Verses, and Lenten Gospel Acclamation from the *Lectionary for Mass* © 1969, 1981, 1997, ICEL. All rights reserved. Used with permission.

Spanish text from *Misal Romano, tercera edición* © 2014, United States Conference of Catholic Bishops– Conferencia Episcopal Mexicana, 3211 Fourth Street NE, Washington, DC 20017–1194; usccb.org. All rights reserved. Used with permission. Spanish response of the Lenten Gospel Acclamation from *Leccionario I* © 1976, 1985, Conferencia Episcopal Mexicana. All rights reserved. Sole US agent: US Conference of Catholic Bishops, 3211 Fourth Street NE, Washington, DC 20017-1194; usccb.org. Used with permission.

Some Spanish gospel verses © 1970, Conferencia Episcopal Española, Añastro, 1, 28033 Madrid, España. All rights reserved. Used with permission. Some Spanish gospel verses © 1972, SOBICAIN, Protasio Gómez, 15, 28027 Madrid, España. All rights reserved. Used with permission.

Published with the approval of the Committee on Divine Worship, United States Conference of Catholic Bishops, 3211 Fourth Street NE, Washington, DC 20017-1194; USCCB.org.

None of the pages in this book may be reproduced in any way without written permission from the publisher.

The following Solo Instrument parts in C and B \flat are available online; visit ocp.org:

Penitential Act with Invocationsed. 30102388
Lord, Have Mercy/Kyrie, Eleisoned. 30102711
Glory to God (Through Composed).ed. 30110432
Gospel Acclamation: Alleluiaed. 30102703

Lenten Gospel Acclamation.ed. 30102704
Holyed. 30102705
We Proclaim Your Deathed. 30102706
When We Eat This Breaded. 30102707
Save Us, Saviored. 30102708
Doxology and Amened. 30102709
Lamb of Goded. 30114709

Mass of Christ the Savior/Misa Cristo Salvador

Keyboard/Vocal Editioned. 30140179
Guitar/Choral Editioned. 30140178
Choral-only Editioned. 30140177
Solo Instrument parts in C for entire Massed. 30115219
Solo Instrument parts in B \flat for entire Massed. 30115218
Solo Instrument parts in C and B \flat for entire Mass.ed. 30115220
Digital Playlist (Bilingual)ed. 30140176
Digital Playlist (English only)ed. 30102391
Digital Playlist (Spanish only)ed. 30140175

For reprintable Assembly Editions, please visit OneLicense.net.

Table of Contents

Penitential Act with Invocations/Acto Penitencial con Invocaciones	4
Lord, Have Mercy/Kyrie, Eleison/Señor, Ten Piedad	6
Glory to God/Gloria a Dios	8
Gospel Acclamation: Alleluia/Aclamación Antes del Evangelio: Aleluya	14
Lenten Gospel Acclamation/Aclamación Antes del Evangelio para Cuaresma.....	16
Eucharistic Acclamations/Aclamaciones Eucarísticas	
Holy/Santo.....	18
We Proclaim Your Death/Anunciamos Tu Muerte	20
When We Eat This Bread/Cada Vez que Comemos	21
Save Us, Savior/Salvador del Mundo	22
Amen/Amén	23
Lamb of God/Cordero de Dios.....	24

PENITENTIAL ACT WITH INVOCATIONS/ ACTO PENITENCIAL CON INVOCACIONES

(♩ = ca. 69)

Re add9

D add9

Priest/Deacon/Cantor

Sacerdote/Diácono/Cantor

Re

D

Cantor/Choir

*You were sent to heal the contrite of heart:

Tú que has sido enviado para sanar a los contritos de corazón:

Lord, _____ have

Ký - ri - e, e -

Se - ñor, _____

La sus4 La Si m

A sus4 A Bm

Re

D

La sus4 La Si m

A sus4 A Bm

Soprano/All

Alto

Baritone

mer - cy.
léi - son.
ten pie - dad.

Lord, _____ have mer - cy.
Ký - ri - e, e - léi - son.
Se - ñor, _____ ten pie - dad.

Priest/Deacon/Cantor

Sacerdote/Diácono/Cantor

Sol

G

Cantor/Choir

You came to call sinners:

Tú que has venido a llamar a los pecadores:

Christ, _____ have

Chri - ste, e -

Cris - to, _____

La sus4

A sus4

La

A

Sol

G

La sus4

A sus4

La

A

All

mer - cy.
léi - son.
ten pie - dad.

Christ, _____ have mer - cy.
Chri - ste, e - léi - son.
Cris - to, _____ ten pie - dad.

Text: English Invocations © 2010, ICEL. All rights reserved. Used with permission. Spanish Invocations, *Misal Romano, tercera edición* © 2014, US Conference of Catholic Bishops — Conferencia Episcopal Mexicana. All rights reserved. Used with permission.

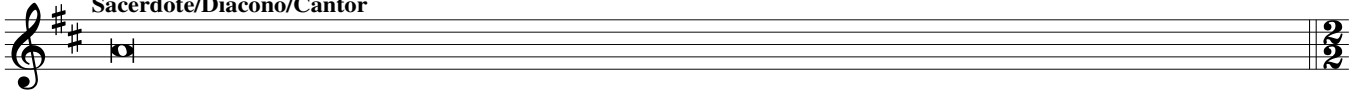
Music: *Mass of Christ the Savior/Misa Cristo Salvador*; Dan Schutte, b. 1947; adapt. for Spanish by Jaime Cortez, b. 1963, © 2007, 2009, 2017, Daniel L. Schutte.

Published by OCP. All rights reserved.

*Invocations may be chanted or spoken.

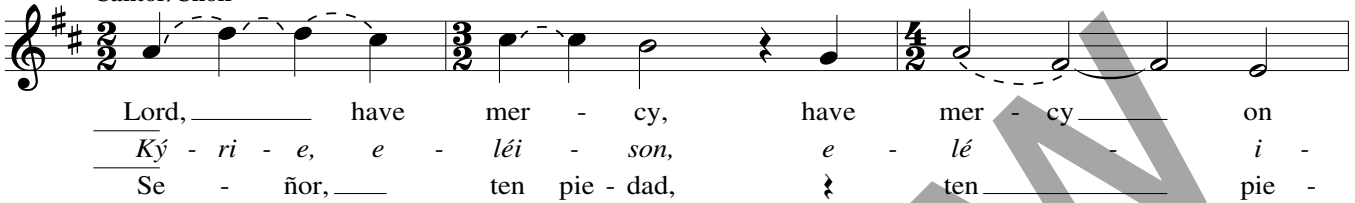
Las Invocaciones pueden ser cantadas o recitadas.

Priest/Deacon/Cantor
Sacerdote/Diácono/Cantor



You are seated at the right hand of the Father to intercede for us:
Tú que estás sentado a la derecha del Padre para interceder por nosotros:

Re/Fa# La/Sol Sol Re/Fa# La
D/F# A/G G D/F# A
Cantor/Choir



Re sus4 Re Re/Fa# La/Sol Sol
Dsus4 D D/F# A/G G



Re/Fa# La Re sus4 Re
D/F# A Dsus4 D



LORD, HAVE MERCY/KYRIE, ELEISON/ SEÑOR, TEN PIEDAD

(♩ = ca. 69)

Re add9 Dadd9 Re D La sus4 A sus4 La A Si m Bm

Cantor/Choir

Lord, _____ have mer - cy.
 Ký - ri - e, e - léi - son.
 Se - ñor, _____ ten pie - dad.

Re D La sus4 A sus4 La A Si m Bm Sol G

Soprano/Alto Cantor/Choir

Lord, _____ have mer - cy. Christ, _____ have
 Ký - ri - e, e - léi - son. Chri - ste, e -
 Se - ñor, _____ ten pie - dad. Cris - to, _____

Baritone

La sus4 A sus4 La A Sol G S/All La sus4 A sus4 La A

mer - cy. Christ, _____ have mer - cy. _____
 léi - son. Chri - ste, e - léi - son. _____
 ten pie - dad. Cris - to, _____ ten pie - dad. _____

B

Music: *Mass of Christ the Savior/Misa Cristo Salvador*; Dan Schutte, b. 1947; adapt. for Spanish by Jaime Cortez, b. 1963, © 2007, 2009, 2017, Daniel L. Schutte.
 Published by OCP. All rights reserved.

LORD, HAVE MERCY/KYRIE, ELEISON/SEÑOR, TEN PIEDAD, cont. (2)

Re/Fa# D/F# Cantor/Choir La/Sol A/G Sol G Re/Fa# D/F# La A

Lord, _____ have mer - cy, have mer - cy _____ on
 Ký - ri - e, e - léi - son, e - lé - i -
 Se - ñor, _____ ten pie - dad, ¿ ten _____ pie -

Re sus4 Dsus4 Re D Re/Fa# D/F# S/All A La/Sol A/G Sol G

us. _____ Lord, _____ have mer - cy, have
 son. _____ Ký - ri - e, e - léi - son, e -
 dad. _____ Se - ñor, _____ ten pie - dad, ¿

Re/Fa# D/F# La A Re sus4 Dsus4 Re D rit.

mer - cy _____ on us. _____
 lé - i - son. _____
 ten pie - dad. _____

GLORY TO GOD/GLORIA A DIOS

INTRO (♩ = ca. 104)

Re	La/Do#	Si m	Fa#m/La	Sol	Mi m7	La sus4	La
D	A/C#	Bm	F#m/A	G	Em7	Asus4	A

(Kbd)

♩ REFRAIN/ESTRIBILLO: 1st time: Cantor/Choir, All repeat; thereafter: All
1a vez: Cantor/Coro, Todos repiten; después: Todos

Re	La/Do#	Si m	Fa#m/La	Sol	Re/Fa#
D	A/C#	Bm	F#m/A	G	D/F#

f (a tempo)
Soprano/All

Alto

Glo - ry to God. Glo - ry to God. Glo - ry to God in the
Glo - ria a Dios. Glo - ria a Dios. Glo - ria a Dios en el

f Baritone (a tempo)

Mi m	La	Re	La/Do#	Si m	Fa#m/La
Em	A	D	A/C#	Bm	F#m/A

high est, and on earth peace, on earth
cie lo, y en la tie - rra paz a los hom - bres,

Text: English © 2010, ICEL. All rights reserved. Used with permission. Spanish, *Misal Romano, tercera edición* © 2014, US Conference of Catholic Bishops – Conferencia Episcopal Mexicana. All rights reserved. Used with permission.
Music: *Mass of Christ the Savior/Misa Cristo Salvador*; Dan Schutte, b. 1947; adapt. for Spanish by Jaime Cortez, b. 1963, © 2007, 2009, 2017, Daniel L. Schutte. Published by OCP. All rights reserved.

Sol G	Re/Fa# D/F#	La sus4 A sus4	La A	1-4 Re sus4 D sus4	Re D <i>(1st time/1a vez: D.S./al S)</i> to Verses/a las Estrofas	Final Re sus4 D sus4
----------	----------------	-------------------	---------	--------------------------	--	----------------------------

peace _____ to peo - ple _____ of good _____ will.
paz a los hom - bres que a - ma el Se - ñor.

1. We _____
 2. *z*
 3. For _____ will.
 1. *Por tu in - ñor.*
 2. *Se -*
 3. *Por - que*

Re D	Mi m Em	Re/Fa# D/F#	Mi m Em	La sus4 A sus4	La A	Re sus4 D sus4	Re D
---------	------------	----------------	------------	-------------------	---------	-------------------	---------

molto rit. A - men. A - men. _____
A - mén. A - mén. _____

Fine/Fin

molto rit. A - men. A - men. _____
A - mén. A - mén. _____

VERSE/ESTROFA 1: Cantor/Choir/Coro

Mi m Em	La A	Re D	Re/Fa# D/F#
------------	---------	---------	----------------

(1. We _____) praise you, *z* we _____ bless you, *7* we a -
(Por tu in -) men - sa glo - ria te a - la - ba - mos, te ben - de -

Mi m/Sol Em/G	La A	Re D	Re/Fa# D/F#	Sol G
------------------	---------	---------	----------------	----------

1. dore you, we glo - ri - fy you, we give _____ you thanks _____
ci - mos, te a - do - ra - mos, te glo - ri - fi - ca - mos,

GLORY TO GOD/GLORIA A DIOS, cont. (3)

La A La/Sol A/G Re/Fa# D/F# Si m7 Bm7 Mi m Em Fa# F# Si m Bm Si m/La Bm/A

1. for your great glo - ry, _____ ̣ Lord God, heav'n - ly _____ King, O
 te da - mos gra - cias, _____ Se - ñor Dios, Rey ce - les - tial, Dios

Sol G Mi m Em * To Refrain/al Estribillo To Verse 2/a la Estrofa 2

La sus4 A sus4 La A La sus4 A sus4 La A

D.S./al $\frac{3}{4}$

1. God, al-might - y _____ Fa - ther. _____ Fa - ther. _____ 2. $\frac{3}{4}$
 Pa - dre to - do - po - de - ro - so. _____ ro - so. _____ Se -

VERSE/ESTROFA 2: *A bit slower* (♩ = ca. 96) Cantor/Choir/Coro

Mi m Em La sus4 A sus4 La A Re D Re/Fa# D/F# Mi m/Sol Em/G La sus4 A sus4 La A

(2. $\frac{3}{4}$) Lord Je - sus Christ, _____ On - ly Be - got - ten
 (Se -) ñor, Hi - jo ú - ni - co, _____ Je - su - cris -

Re D Re/Fa# D/F# Mi m Em La sus4 A sus4 La A Re/Fa# D/F# Si m Bm

2. Son, _____ ̣ Lord God, _____ Lamb of _____ God,
 to; _____ Se - ñor Dios, _____ Cor - de - ro de Dios,

*For a responsorial setting of the Gloria, sing as written. For a through-composed setting, omit the Refrain between each Verse and use the Optional Final Ending.

*El Estribillo se puede repetir después de cada Estrofa. O bien, después de cantar el Estribillo la primera vez, se puede omitir, cantando las Estrofas de principio a fin, terminando con la Estrofa 3 y el amén.

Sol G Re/Fa# D/F# Sol G rit. La A Slower Sol G La sus4 A sus4 La A

2. Son of the Fa - ther, you take a - way the
 Hi - jo del Pa - dre; tú que qui - tas el pe -

rit.

Re/Fa# D/F# Sim Bm Mi m Em Re/Fa# D/F# Mi m/Sol Em/G La A

2. sins of the world, y have mer - cy on us; you
 ca - do del mun - do, ten pie - dad de no - so - tros; tú que

Sol G La sus4 A sus4 La A Re/Fa# D/F# Sim Bm Mi m Em Re/Fa# D/F# Sol G

2. take a - way the sins of the world, y re - ceive our
 qui - tas el pe - ca - do del mun - do, a - tien - de nues - tra

La sus4 A sus4 La A Sol G La A

2. prayer; you are seat - ed at the
 sú - pli - ca; tú que es - tás sen - ta - do a la de -

Re/Fa# D/F# Si m Bm Mi m Em Fa# F# Si m Bm Si m/La Bm/A

2. right hand, re - cha, a la de - re - cha del Pa - dre, have ten pie -

the right hand of the Fa - ther, have

Sol G Mi m Em *poco a poco accel.*

To Refrain/al Estribillo
La sus4 A sus4 La A

To Verse 3/a la Estrofa 3
La sus4 A sus4 La A

D.S./al 8 (2/4)

2. mer - cy on us. us. 3. For so - tros. so - tros. Por - que

dad de no - so - tros.

poco a poco accel.

VERSE/ESTROFA 3: Cantor/Choir/Coro

Mi m Em La A Re D Re/Fa# D/F# Mi m/Sol Em/G La A

Re D Re/Fa# D/F# Sol G La A Re/Fa# D/F# Si m7 Bm7

(3. For) you a - lone are the Ho - ly One, you a - lone are the
(Por - que) só - lo tú e - res San - to, só - lo tú Se -

3. Lord, you a - lone are the Most High,
ñor, só - lo tú Al - tí - si - mo,

Mi m Re/Fa# Mi m/Sol La Re Fa#7 Si m Si m/La
 Em D/F# Em/G A D F#7 Bm Bm/A

cresc.

3. Je - sus Christ, _____ ̣ with the Ho - ly _____ Spir - it, _____ in the
 Je - su - cris - to, _____ con el Es - pí - ri - tu San - to _____ en la

Sol Re/Fa#
 G D/F#

3

To Refrain/al Estribillo
 Mi m La
 Em A

To Amen/al Amén
 Mi m La
 Em A

D.S. al fine/al $\frac{2}{4}$ y fin

3. glo - ry of God the Fa - ther. _____ Fa - ther. _____
 glo - ria de Dios _____ Pa - dre. _____ Pa - dre. _____

Mi m Re/Fa# Mi m La sus4 La Re sus4 Re
 Em D/F# Em A sus4 A D sus4 D

molto rit.

Fine/Fin

S

A - men. A - men.
 A - mén. A - mén.

B

molto rit.

A - men. A - men. _____
 A - mén. A - mén. _____

GOSPEL ACCLAMATION: ALLELUIA/ ACLAMACIÓN ANTES DEL EVANGELIO: ALELUYA

INTRO (♩ = ca. 88)

Mi m Re/Fa# Sol La sus4 La
Em D/F# G A sus4 A

(Kbd)

♩ REFRAIN/ESTRIBILLO: 1st time: Cantor/Choir, All repeat; thereafter: All
1a vez: Cantor/Coro, Todos repiten; después: Todos

Re La/Do# Si m Fa#m/La Sol La sus4 La
D A/C# Bm F#m/A G A sus4 A

Soprano (a tempo) last time/última vez: *molto rit.*

Alto

Al - le - lu - ia. Al - le - lu - ia. Al - le - lu -
A - le - lu - ya. A - le - lu - ya. A - le - lu -

Baritone (a tempo) last time/última vez: *molto rit.*

1	2	Final
Re La sus4 La	Re	Re Re
D A sus4 A	D	D sus4 D
to Verse/a la Estrofa		Fine/Fin

ia. ia. ia.

ya. ya. ya.

Text: English verses © 1969, 1981, 1997, ICEL. All rights reserved. Used with permission. Spanish Verse 1 © 1972, SOBICAIN. All rights reserved. Used with permission.

Spanish Verse 2 © 1970, Conferencia Episcopal Española. All rights reserved. Used with permission.

Music: Mass of Christ the Savior/Misa Cristo Salvador; Dan Schutte, b. 1947; adapt. for Spanish by Jaime Cortez, b. 1963, © 2007, 2009, 2017, Daniel L. Schutte. Published by OCP. All rights reserved.

VERSE/ESTROFA 1: Cantor/Choir/Coro

Mi m La sus4 La/Sol Re/Fa# Si m Si m/La
 Em A sus4 A/G D/F# Bm Bm/A

1. 7 Your words, _____ O Lord, _____ are Spir - it and life. _____
 Tus pa - la - bras, Se - ñor, son es - pí - ri - tu y vi - da; _____ tú

Sol Re/Fa# Mi m Re/Fa# Sol La sus4 La
 G D/F# Em D/F# G A sus4 A

1. You have the words of ev - er - last - ing life. _____
 tie - nes pa - la - bras, pa - la - bras de vi - da e - ter - na. _____

rit. *D.S. al fine/al S y fin*

VERSE/ESTROFA 2: Cantor/Choir/Coro

Mi m La La/Sol Re/Fa# Si m Mi m7 Re/Fa# Sol La sus4 La
 Em A A/G D/F# Bm Em7 D/F# G A sus4 A

2. I wait _____ for the Lord; my soul _____ waits for his word. _____
 Es - pe - ro en el Se - ñor, es - pe - ro en su Pa - la - bra. _____

rit. *D.S. al fine/al S y fin*

Note: Solo Instrument parts include 4 verses. Verses 1 & 3 in the Solo Instrument parts correspond to verses 1 & 2 in this edition.
 Nota: Las partituras para Instrumento incluyen 4 estrofas. Las estrofas 1 y 3 en la partitura de Instrumento corresponden a las estrofas 1 y 2 en esta edición.

VERSE/ESTROFA 1: Cantor/Choir/Coro

Mi m La sus4 La/Sol Re/Fa# Si m Si m/La
 Em A sus4 A/G D/F# Bm Bm/A

1. 7 Your words, O Lord, are Spir - it and life.
 Tus pa - la - bras, Se - ñor, son es - pí - ri - tu y vi - da; tú

Sol Re/Fa# Mi m Re/Fa# Sol La sus4 La
 G D/F# Em D/F# G A sus4 A

rit. *D.S. al fine/al 5/8 y fin*

1. You have the words of ev - er - last - ing life. 7
 tie - nes pa - la - bras, pa - la - bras de vi - da e - ter - na. Ho -

VERSE/ESTROFA 2: Cantor/Choir/Coro

Mi m La La/Sol Re/Fa# Si m Mi m7 Re/Fa# Sol La sus4 La
 Em A A/G D/F# Bm Em7 D/F# G A sus4 A

rit. *D.S. al fine/al 5/8 y fin*

2. I wait for the Lord; my soul waits for his word. 7
 Es - pe - ro en el Se - ñor, es - pe - ro en su Pa - la - bra. Ho -

Note: Solo Instrument parts include 4 verses. Verses 1 & 3 in the Solo Instrument parts correspond to verses 1 & 2 in this edition.
 Nota: Las partituras para Instrumento incluyen 4 estrofas. Las estrofas 1 y 3 en la partitura de Instrumento corresponden a las estrofas 1 y 2 en esta edición.

HOLY/SANTO

INTRO (♩ = ca. 84)

Mi m Re/Fa# Sol La sus4 La
Em D/F# G A sus4 A

(Kbd)

Re La/Do# Si m Fa#m/La Sol Re/Fa#
D A/C# Bm F#m/A G D/F#

English Ho - ly, Ho - ly, Ho - ly Lord
Español San - to, San - to, San - to es el Se - ñor, Dios del u - ni -
Biling. Ho - ly, Ho - ly, Ho - ly Lord

Mi m La sus4 La Re La/Do# Si m Si m/La
Em A sus4 A D A/C# Bm Bm/A

God of hosts. Heav - en and earth are full, are
ver - so. Lle - nos es - tán el cie - lo y la
God of hosts. Lle - nos es - tán el cie - lo y la

Sol Re/Fa# Sol La sus4 La Si m La Re/Fa#
G D/F# G A sus4 A Bm A D/F#

full of your glo - ry. Ho - san - na! Ho -
tie - rra de tu glo - ria. Ho - san - na, ho -
tie - rra de tu glo - ria. Ho - san - na! Ho -

Text: English © 2010, ICEL. All rights reserved. Used with permission. Spanish, *Misal Romano, tercera edición* © 2014, US Conference of Catholic Bishops – Conferencia Episcopal Mexicana. All rights reserved. Used with permission.
Music: *Mass of Christ the Savior/Misa Cristo Salvador*; Dan Schutte, b. 1947; adapt. for Spanish by Jaime Cortez, b. 1963, © 2007, 2009, 2017, Daniel L. Schutte. Published by OCP. All rights reserved.

Sol La/Sol Re/Fa# Mi m Re/Fa# Sol La Re sus4 Re
 G A/G D/F# Em D/F# G A Dsus4 D

última vez/last time: molto rit. (Fine/Fin)

san - na! Ho - san - na in the high - est.
 san - na, ho - san - na en el cie - lo.
 san - na! Ho - san - na in the high - est.

última vez/last time: molto rit.

Re La/Do# Si m Si m/La Sol Re/Fa# Sol
 D A/C# Bm Bm/A G D/F# G

γ Bless - ed is he who comes, who comes in the name of the
 Ben - di - to el que vie - ne en nom - bre del Se -
 Ben - di - to el que vie - ne en nom - bre del Se -

La sus4 La
 A sus4 A

Lord. Ho -
 ñor. Ho -
 ñor. Ho -

WE PROCLAIM YOUR DEATH/ ANUNCIAMOS TU MUERTE

(♩ = ca. 84)

Re sus2 D sus2 Priest

La sus4 A sus4 La A

The mys - t'ry of faith.

És - te es el Mis - te - rio de la fe.
O bien: És - te es el Sa - cra - men - to de nues - tra fe.

Re La/Do# Si m Si m/La Sol La sus4 La
D A/C# Bm Bm/A G A sus4 A

Soprano/All
Alto

We pro - claim your Death, O Lord, and pro - fess your Res - ur -
A - nun - cia - mos tu muer - te, pro - cla - ma - mos tu re - su - rrec -

Baritone

Fa#m7 F#m7 Si m Mi m Re/Fa# Sol La
Bm Bm Em D/F# G A

1 Re sus4 Re Re sus4 Re
D sus4 D D

Final Re sus4 Re
D sus4 D

rec - tion un - til you come a - gain. We pro - gain.
ción. ¿ ¡Ven, Se - ñor Je - sús! A - nun - sús!

last time/última vez: *molto rit.*

last time/última vez: *molto rit.*

Text: English © 2010, ICEL. All rights reserved. Used with permission. Spanish, *Misal Romano, tercera edición* © 2014, US Conference of Catholic Bishops – Conferencia Episcopal Mexicana. All rights reserved. Used with permission.
Music: *Mass of Christ the Savior/Misa Cristo Salvador*; Dan Schutte, b. 1947; adapt. for Spanish by Jaime Cortez, b. 1963, © 2007, 2009, 2017, Daniel L. Schutte. Published by OCP. All rights reserved.

WHEN WE EAT THIS BREAD/CADA VEZ QUE COMEMOS

(♩ = ca. 84)
La sus4 La
A sus4 A

Re sus2
D sus2
Priest

The mys - t'ry of faith. _____

Sacerdote

Éste es el Misterio de la fe. Cris - to nos re - di - mió. _____

Re La/Do# Si m Si m/La Mi m Re/Fa#
D A/C# Bm Bm/A Em D/F#

Soprano/Alto
Alto

When we eat this Bread and drink this
Ca - da vez que co - me - mos de es - te pan y be - be - mos de es - te

Baritone

Mi m/Sol La La/Sol Re/Fa# Si m Si m/La Sol Re/Fa#
Em/G A A/G D/F# Bm Bm/A G D/F#

Cup, we pro - claim your Death, O Lord, un -
cá - liz, a - nun - cia - mos tu muer - te, Se - ñor, 7

	1 Re sus4 Re D sus4 D	Final Re sus4 Re D sus4 D
--	------------------------------------	--

Mi m Re/Fa# Sol La
Em D/F# G A

last time/última vez: *molto rit.*

til you come a - gain. When we gain.
has - ta que vuel - vas. Ca - da vuel - vas.

last time/última vez: *molto rit.*

Text: English © 2010, ICEL. All rights reserved. Used with permission. Spanish, *Misal Romano, tercera edición* © 2014, US Conference of Catholic Bishops – Conferencia Episcopal Mexicana. All rights reserved. Used with permission.
Music: *Mass of Christ the Savior/Misa Cristo Salvador*; Dan Schutte, b. 1947; adapt. for Spanish by Jaime Cortez, b. 1963, © 2007, 2009, 2017, Daniel L. Schutte. Published by OCP. All rights reserved.

SAVE US, SAVIOR/SALVADOR DEL MUNDO

(♩ = ca. 84)

Re sus2 D sus2 Priest La sus4 La A sus4 A

The mys - t'ry of faith. _____

Sacerdote

Éste es el Misterio de la fe. Cris - to se en - tre - gó por no - so - tros. _____

Re La/Do# Si m Si m/La Sol La sus4 La/Sol
D A/C# Bm Bm/A G A sus4 A/G

Soprano/All Alto Baritone

Save us, save us, Sav - ior of the
Sal - va - dor del mun - do, sál - va -

Re/Fa# Re Re/Do# Si m Sol Re/Fa# Si m
D/F# D D/C# Bm G D/F# Bm

world, for by your Cross and Res - ur - rec - tion _____
nos, tú que nos has li - be - ra - do _____ por tu

Mi m Re/Fa# Sol La 1 Final
Em D/F# G A Re sus4 Re Re sus4 Re
D sus4 D D sus4 D

last time/última vez: *molto rit.*

you have set us free. free.
cruz y re - su - rrec - ción. ción.

last time/última vez: *molto rit.*

Text: English © 2010, ICEL. All rights reserved. Used with permission. Spanish, *Misal Romano, tercera edición* © 2014, US Conference of Catholic Bishops – Conferencia Episcopal Mexicana. All rights reserved. Used with permission.
Music: *Mass of Christ the Savior/Misa Cristo Salvador*; Dan Schutte, b. 1947; adapt. for Spanish by Jaime Cortez, b. 1963, © 2007, 2009, 2017, Daniel L. Schutte. Published by OCP. All rights reserved.

AMEN/AMÉN

(♩ = ca. 84)

	Mi m	Re/Fa#	Sol	La sus4	La	Re	La/Do#
	Em	D/F#	G	A sus4	A	D	A/C#

Soprano/Alto

(Kbd)

Baritone

	Si m	Re/Fa#	Mi m	Re/Fa#	Sol	La	
	Bm	D/F#	Em	D/F#	G	A	

last time/última vez: molto rit.

1 Re sus4 Re D sus4 D	Final Re sus4 Re D sus4 D
--	--

last time/última vez: molto rit.

Music: *Mass of Christ the Savior/Misa Cristo Salvador*; Dan Schutte, b. 1947, © 2007, 2009, 2017, Daniel L. Schutte. Published by OCP. All rights reserved.

LAMB OF GOD/CORDERO DE DIOS

INTRO (♩ = ca. 80)

Re La/Do# Si m Si m/La Sol Mi m7 La sus4
D A/C# Bm Bm/A G Em7 Asus4

(Kbd)

La Re La/Do# Si m Si m/La Sol La La/Sol
A D A/C# Bm Bm/A G A A/G

Soprano
Lamb of God, you take a - way the
Cor - de - ro de Dios, que qui - tas el pe -

Alto

Baritone

1, 2 (Repeat as needed)

Fa#m7 Si m Si m/La Mi m Re/Fa# Mi m/Sol La
F#m7 Bm Bm/A Em D/F# Em/G A D.S./al ♩

sins of the world, have mer - cy on us. *Cor -*
ca - do del mun - do, ten pie - dad de no - so - tros.

Final

Si m Si m/La Mi m Re/Fa# Sol La sus4 La Re Re sus4 Re
Bm Bm/A Em D/F# G Asus4 A D Dsus4 D
rit. Slower rit.

world, grant us peace.
mun - do, da - nos la paz.

rit. rit.

Music: Mass of Christ the Savior/Misa Cristo Salvador; Dan Schutte, b. 1947; adapt. for Spanish by Jaime Cortez, b. 1963, © 2007, 2009, 2017, Daniel L. Schutte. Published by OCP. All rights reserved.

