

30140474
30140482 (PDF)

Mass of Christ the Inner Light

R. Manalo

OCP *Choral Series*

Mass of Christ the Inner Light

Ricky Manalo, CSP

Choral

MUSIC · WORSHIP · SERVICE

1.800.548.8749

ocp.org



Mass of Christ the Inner Light – Choral Edition

Ricky Manalo, CSP

© 2018, OCP

5536 NE Hassalo, Portland, OR 97213

(503) 281-1191 liturgy@ocp.org www.ocp.org

Excerpts from the English translation of *The Roman Missal* © 2010, International Commission on English in the Liturgy Corporation (ICEL), 1100 Connecticut Ave. NW, Suite 710, Washington, DC 20036; the English translation of some Alleluia verses and Lenten Gospel verses from *Lectionary for Mass* © 1969, 1981, 1997, ICEL. All rights reserved. Used with permission.

Some Lenten Gospel verses from the *Lectionary for Mass for use in the Diocese of the United States* © 1970, 1997, 1998, Confraternity of Christian Doctrine, Inc. (CCD), 3211 Fourth Street NE, Washington, DC 20017-1194.

Published with the approval of the Committee on Divine Worship, United States Conference of Catholic Bishops, 3211 Fourth Street NE, Washington, DC 20017-1194; USCCB.org.

None of these pages may be reproduced in any way without written permission from the publisher.

Mass of Christ the Inner Light

Keyboard/Choral Edition	ed. 30140476
Guitar/Vocal Edition	ed. 30140475
Choral-only Edition	ed. 30140474
Keyboard/Vocal Edition	ed. 30141010
Solo Instrument in C (online PDF)	ed. 30141111
Eucharistic Prayer II, Composer Manuscript	ed. 30141045
Additional Gospel Acclamation Verses, Composer Manuscript	ed. 30141082
Be Still and Know I'm Here with Mass of Christ the Inner Light - CD	ed. 30140467

For reprintable Assembly Editions, please visit OneLicense.net.

TABLE OF CONTENTS

Penitential Act with Invocations	4
Kyrie, Eleison/Lord, Have Mercy	6
Glory to God	7
Alleluia	10
Lenten Gospel Acclamation	11
Eucharistic Acclamations	
Preface Dialogue	14
Holy	14
We Proclaim Your Death	16
When We Eat This Bread	17
Save Us, Savior	18
Doxology and Amen	19
Lamb of God	20

Preview

PENITENTIAL ACT WITH INVOCATIONS

Priest

Brothers and sisters, let us acknowledge our sins,
and so prepare ourselves to celebrate the sa - cred mysteries.

Priest/Deacon/Cantor

You were sent to heal the contrite of heart:

(♩ = ca. 80)

Cantor/Choir *Soprano/All*

Alto

Tenor

Bass

Ky - ri - e, e - le - i - son. Ky - ri - e, e - le - i - son.
Lord, have mer - cy. Lord, have mer - cy.

Priest/Deacon/Cantor

You came to call sin - ners:

Cantor/Choir *All*

Alto

Tenor

Bass


Chri - ste, e - le - i - son. Chri - ste, e - le - i - son.
Christ, have mer - cy. Christ, have mer - cy.

Priest/Deacon/Cantor *a tempo*

You are seated at the right hand of the Father to in - ter - cede for us:

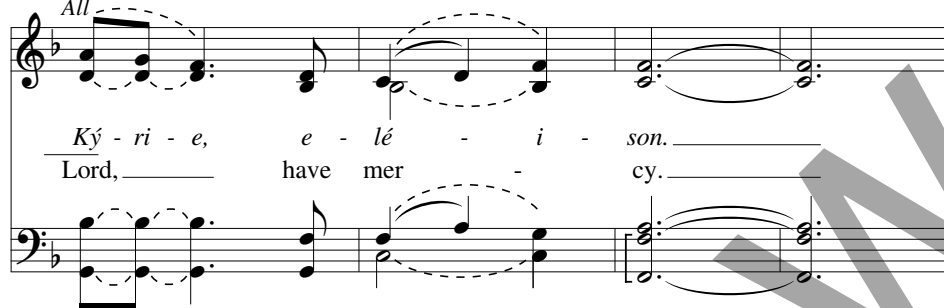
Text: Introduction, Invocations and Absolution © 2010, ICEL. All rights reserved. Used with permission.
Music: *Mass of Christ the Inner Light*; Ricky Manalo, CSP, b. 1965, © 2017, Ricky Manalo, CSP.
Published by OCP. All rights reserved.

Cantor/Choir



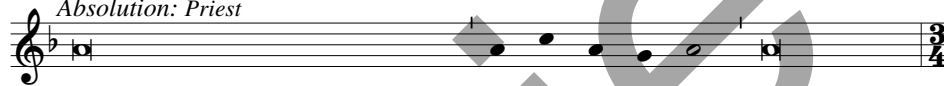
Ký - ri - e, e - lé - i - son.
Lord, have mer - cy.

All



Ký - ri - e, e - lé - i - son.
Lord, have mer - cy.

Absolution: Priest



May almighty God have mercy on us, for-give us our sins, and bring us to

a tempo *All rit.*



ev - er - last - ing life. A - men.

KYRIE, ELEISON/LORD, HAVE MERCY

(♩ = ca. 80)

2 *Cantor/Choir* *Soprano/All*

Alto

Ký - ri - e, e - lé - i - son. Ký - ri - e, e -
Lord, have mer - cy. Lord, have

2 *Tenor* *Bass*

Cantor/Choir *All*

lé - i - son. Chri - ste, e - lé - i - son. Chri - ste, e -
mer - cy. Christ, have mer - cy. Christ, have

Cantor/Choir

lé - i - son. Ký - ri - e, e - lé - i - son.
mer - cy. Lord, have mer - cy.

All

Ký - ri - e, e - lé - i - son.
Lord, have mer - cy.

Music: *Mass of Christ the Inner Light*; Ricky Manalo, CSP, b. 1965, © 2017, Ricky Manalo, CSP.
 Published by OCP. All rights reserved.

GLORY TO GOD

(RESPORIAL SETTING AND THROUGH-COMPOSED SETTING)

Intro: Moderato (♩. = ca. 60)

4

Refrain

Glo-ry to God in the high - est, and on earth peace_ to peo - ple of_ good

1, 2 to Verses 1, 2	3 to Verse 3	Final
------------------------	-----------------	-------

will. 1. We 2. 3. For A - men. rit. 2 Fine

Verse 1

(1. We) praise you, we bless_ you, we a - dore you, we
1. glo - ri - fy you, we give you thanks for your great glo - ry,
1. Lord God, heav-en - ly King, O God, al-might - y Fa-ther. *(D.S.)

Text © 2010, ICEL. All rights reserved. Used with permission.
 Music: *Mass of Christ the Inner Light*; Ricky Manalo, CSP, b. 1965; arr. by Craig Kingsbury, b. 1952,
 © 2017, Ricky Manalo, CSP. Published by OCP. All rights reserved.

Performance options: 1) return to Refrain after each verse, or 2) through-composed (continuing verse to verse).

***For a through-composed version, ignore *D.S.* marking and continue to following section.**

GLORY TO GOD, cont. (2)

Verse 2

S/A *S*
2. Lord Je - sus Christ, — On - ly Be - got - ten Son, Lord God,
T/B *B*

S/A
2. Lamb — of God, Son of the Fa - ther, — you take a - way the
T/B

2. sins of the world, have mer - cy on us; — you take a - way — the

2. sins of the world, re - ceive — our prayer; you are seat - ed — at the

2. right hand — of the Fa - ther, — have mer - cy on

2. us. To Refrain D.S. To Verse 3 S/A

2. us. Have mer-cy on us. us. 3. For

2. us. T/B

Verse 3

3. you a-lone are the Ho-ly One, you a-lone are the Lord,

3. you a-lone are the Most High, Je-sus Christ, with the

3. Ho-ly Spir-it, in the glo-ry of God the Fa-ther.

To Refrain To Amen

D.S. al fine *rit.* 2

3. A-men.

rit. 2

ALLELUIA

Intro (♩. = ca. 60)

8

♩ Refrain: 1st time: Cantor, All repeat; thereafter: All

mf Al - le - lu - ia. Al - le - lu - ia. Al - le - lu - ia. Al - le - lu - ia.

mf Al - le - lu - ia.

Al - le - lu - ia. Al - le - lu - ia. Al - le - lu - ia.

1, 2 *I: D.S.* Final 4 *Fine*
2: to Verse

*Verses: Cantor/Choir

1. Speak, O LORD, your ser- vant is listening; you have the words of
2. Your words, Lord, are Spir - it and life; you have the words of
3. I am the light of the world, says the Lord; whoever follows me will

a tempo *D.S. al fine*

1. ev - er - last - ing life. (1 Sam 3:9, Jn 6:68c)
2. ev - er - last - ing life. (Jn 6:63c, 68c)
3. have the light of life. (Jn 8:12)

Text: Verse 1 © 1970, 1997, 1998, 2002, CCD. All rights reserved. Used with permission.
 Verses 2 and 3 © 1969, 1981, 1997, ICEL. All rights reserved. Used with permission.
 Music: *Mass of Christ the Inner Light*; Ricky Manalo, CSP, b. 1965, © 2017, Ricky Manalo, CSP.
 Published by OCP. All rights reserved.

*All three Gospel Acclamation Verses may be used on any Sunday during Ordinary Time (Years ABC).

LENTEN GOSPEL ACCLAMATION

Intro (♩. = ca. 60)

6

♩ Refrain: 1st time: Cantor, All repeat; thereafter: All

S/A mf *S*

Glo-ry to you, Lord Je - sus Christ, — Son of the liv - ing

T/B mf *T* *B*

God! —

liv - ing God! God! — Glo-ry to you, — Lord Je - sus Christ, —

liv - ing God!

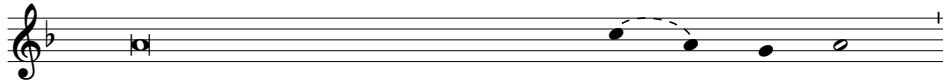
1, 2	1: <i>D.S.</i> 2: <i>to Verse</i>	Final <i>rit.</i>	3 <i>Fine</i>
------	--------------------------------------	----------------------	---------------

Son of the liv - ing God! God!

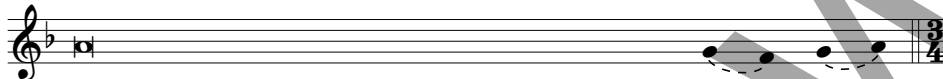
rit.

Text: Refrain and some Gospel verses © 1969, 1981, 1997, ICEL. All rights reserved. Used with permission.
 Some Gospel verses © 1970, 1997, 1998, CCD. All rights reserved. Used with permission.
 Music: *Mass of Christ the Inner Light*; Ricky Manalo, CSP, b. 1965, © 2017, Ricky Manalo, CSP.
 Published by OCP. All rights reserved.

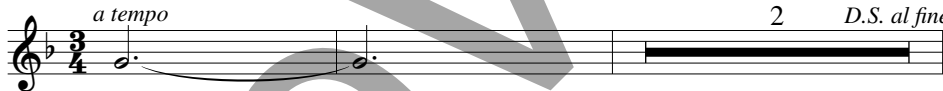
Verses: Sundays in Lent



- | | | | | |
|---------------|--|-------------|-------|--------------|
| 1ABC | 1. One does not live on | bread | _____ | a - lone, |
| 2ABC | 2. From the shining cloud the | Fa - ther's | voice | is heard: |
| 3A | 3. Lord, you are truly the | Sav - ior | of | the world: |
| 3B, 4B | 4. God so loved the world that he | gave | his | on - ly Son, |
| 3C | 5. Repent, says the Lord; the kingdom of | (-----) | | |
| 4A | 6. I am the light of the world, | says | _____ | the Lord; |
| 4C | 7. I will get up and go to my Father and shall | say | _____ | to him: |
| 5A | 8. I am the resurrection and the life | says | _____ | the Lord; |
| 5B | 9. Whoever serves me must follow me | says | _____ | the Lord; |
| 5C | 10. Even now, | says | _____ | the Lord, |

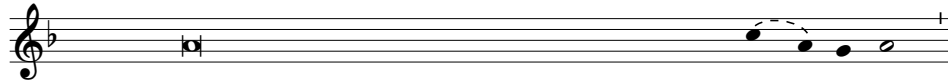


- | | | | | |
|---|-----------------|-----------|--------|----------|
| 1. but on every word that comes forth from the | mouth | _____ | of | _____ |
| 2. This is my beloved son, | [2A, C] (-----) | hear | _____ | |
| 3. give me living water, that I may | [2B] | lis - ten | to | _____ |
| 4. so that everyone who believes in him might have | | nev - er | thirst | a - |
| 5. (-----) | | e - ter - | nal | _____ |
| 6. whoever follows me will | | heav - en | is | at |
| 7. Father, I have sinned against heaven | | have | the | light of |
| 8. whoever believes in me, even if he dies, will | | and | a - | gainst |
| 9. and where I am, there also will my | | nev - | er | _____ |
| 10. return to me with your whole heart; for I am gracious and | | ser - | vant | _____ |
| | | mer | - | ci - |

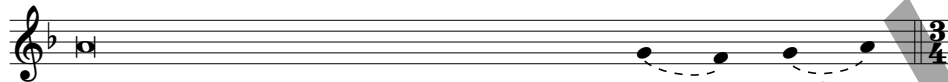


1. God. _____
2. him. _____
3. gain. _____
4. life. _____
5. hand. _____
6. life. _____
7. you. _____
8. die. _____
9. be. _____
10. ful. _____

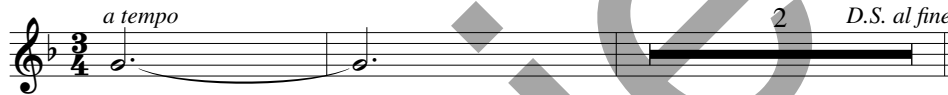
Verses: Ash Wednesday & Holy Week



- Ash Wed.** 1. If today you hear ___ his voice,
Palm Sun. 2. Christ became obedient to the point of death, even death on a cross,
Christ Mass 3. The Spirit of the LORD is up - on me;
Holy Thur. 4. I give you a new commandment, says ___ the Lord:
Good Fri. 5. Christ became obedient to the point of death, even death on a cross.



1. (-----) hard - en not your
 2. Because of this, God greatly exalted him
 and bestowed on him the name which is above ev - ery
 3. for he sent me to bring glad tid - ings to the
 4. love one another as I have loved
 5. Because of this, God greatly exalted him
 and bestowed on him the name which is above ev - ery oth - er



1. hearts. _____
 2. name. _____
 3. poor. _____
 4. you. _____
 5. name. _____

PREFACE DIALOGUE

Priest The Lord be with you. *All* And with your spirit. *Priest* Lift up your hearts.

All We lift them up to the Lord. *Priest* Let us give thanks to the

All Lord our God. It is right and just.

Text © 2010, ICEL. All rights reserved. Used with permission.
 Music: *Mass of Christ the Inner Light*; Ricky Manalo, CSP, b. 1965, © 2017, Ricky Manalo, CSP.
 Published by OCP. All rights reserved.

HOLY

Intro (♩ = ca. 140)

S/A mp
 Ho - ly, Ho - ly, Ho - ly

T/B mp

S
A Lord God, Lord God of hosts.

T
B

S/A *cresc.*
 Heav - en and earth are full of your glo - ry. Ho -

T/B *cresc.* *

Text © 2010, ICEL. All rights reserved. Used with permission.
 Music: *Mass of Christ the Inner Light*; Ricky Manalo, CSP, b. 1965, © 2017, Ricky Manalo, CSP.
 Published by OCP. All rights reserved.

*From mm. 17-26, basses sing lower two notes.

san - na in the high - est. Ho - san - na

in the high - est. Bless - ed is

he who comes in the name of the Lord. Ho-

⊕ Coda rit. 2

est. 2

rit.

WE PROCLAIM YOUR DEATH

(♩ = ca. 126)

Priest *Soprano/Alto*

The mys-ter-y of faith. We pro-claim your

Tenor
Bass

Death, O Lord, and pro-fess your Res-ur-

rec-tion un-til you come a-gain, un-

til you come a-gain.

rit.

Text © 2010, ICEL. All rights reserved. Used with permission.
Music: *Mass of Christ the Inner Light*; Ricky Manalo, CSP, b. 1965, © 2017, Ricky Manalo, CSP.
Published by OCP. All rights reserved.

SAVE US, SAVIOR

(♩ = ca. 126)

Priest *Soprano/Alto*

The ___ mys-ter - y of faith. Save us, Sav - ior

Alto
Tenor
Bass

of ___ the world, ___ for by ___ your Cross ___ and Res - ur -

rec - tion ___ you ___ have set ___ us free. rit.

rit.

Text © 2010, ICEL. All rights reserved. Used with permission.
Music: *Mass of Christ the Inner Light*; Ricky Manalo, CSP, b. 1965, © 2017, Ricky Manalo, CSP.
Published by OCP. All rights reserved.

DOXOLOGY AND AMEN

Priest

Through him, and with him, and in him, O God, al-might-y Fa - ther,
 in the unity of the Ho - ly Spir-it, all glo-ry and hon-or is yours, for
 (♩ = ca. 126)
cresc.
 ev - er _____ and _____ ev - er. _____

Soprano/All
f
 A - men. A - men.
Alto
*Tenor **
Bass f

rit. 2
 A - men.
rit. 2

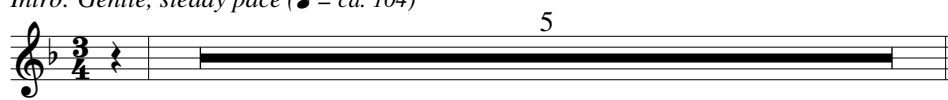
Text: Doxology © 2010, ICEL. All rights reserved. Used with permission.
 Music: *Mass of Christ the Inner Light*; Ricky Manalo, CSP, b. 1965, © 2017, Ricky Manalo, CSP.
 Published by OCP. All rights reserved.

*From mm. 5-11, basses sing lower two notes.

LAMB OF GOD

Intro: Gentle, steady pace (♩ = ca. 104)

5



a tempo
mp



Lamb of God, you take away the sins of the




world, have mercy on us.

mp
a tempo



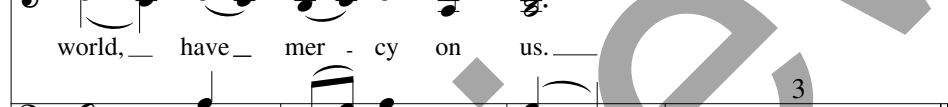
world, of the world, grant us peace,

1, 2




world, have mercy on us.

3 *rit.*



world, of the world, grant us peace,


3 *rit.*




grant us peace.

Final

rit. *a tempo*




world, of the world, grant us peace,



grant us peace.


rit. *a tempo*

rit.



grant us peace.

rit.



grant us peace.

Music: *Mass of Christ the Inner Light*; Ricky Manalo, CSP, b. 1965, © 2017, Ricky Manalo, CSP.
Published by OCP. All rights reserved.

