

30141224
30141225 (PDF)

I Found the Treasure
Assembly, Two-part Choir, Keyboard, Guitar,
and Solo Instrument I & II in C

Dan Schutte

GLORY & PRAISE
S E R I E S

I Found the Treasure

Dan Schutte

FROM THE CHORAL SONGBOOK

Love and Grace

Songbook #30141298

CD #30141299

ocp.org | 1-800-LITURGY (548-8749)



I Found the Treasure

Based on Matthew 13:44, John 6:68

Dan Schutte

INTRO/INTERLUDE (♩ = ca. 106)

Keyboard

Chords: Eb, Bb/Eb, Ab/Eb, Eb

Chords: Bb7, Ab/Bb, Ebsus2, Eb

VERSES

Melody

1. Lord, to whom can I go? You a -
 2. Je - sus, Lord of my life, I can

*Harmony (vs. 2 only)

2. Je - sus, Lord of my life, I can

Chords: Eb, Fm/Eb, Eb

© 1985, Daniel L. Schutte. Published by OCP, 5536 NE Hassalo, Portland, OR 97213. All rights reserved.

*Harmony may be sung by altos, or by tenors in the alto octave.

1. lone speak the words of life. You a -
 2. ask for noth - ing more than to

2. ask for noth - ing more than to

Ab/Eb Bb7sus4 Bb Ebsus4 Eb

1. lone on the earth or in heav - en a - bove are my
 2. see and be - lieve that my life lies in you, in the

2. see and be - lieve that my life lies in you, in the

Fm Bb Eb Bb7/D Cm Cm/Bb

1. Sav - ior and my Lord.
 2. king - dom of my Lord.

2. king - dom of my Lord.

rit. **1: to Refrain 1**
2: to Refrain 2

Ab Ab/G Fm7 Bbsus4 Bb7 **1: to Refrain 1**
2: to Refrain 2

REFRAIN 1

a tempo

I found the trea- sure in a field _____

a tempo

a tempo

E_b E_b/D A_b6/C E_b $E_b\text{sus}2,4$ E_b $E_b\text{sus}2,4$

that nei - ther time nor death can steal. _____ I will

E_b E_b/D A_b6/C $B_b\text{sus}4$ B_b

sell what I have, give all that I am, to

E_b A_b/C E_b E_b/D A_b/C

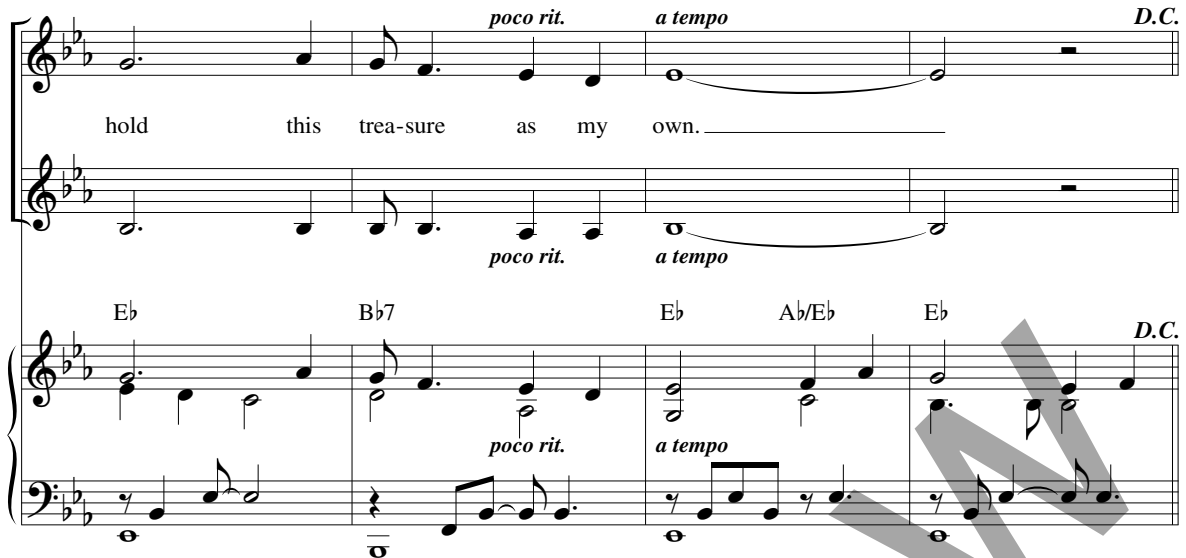
I Found the Treasure

poco rit. *a tempo* *D.C.*

hold this trea-sure as my own.

poco rit. *a tempo*

E_b *B_b7* *E_b* *A_b/E_b* *E_b* *D.C.*



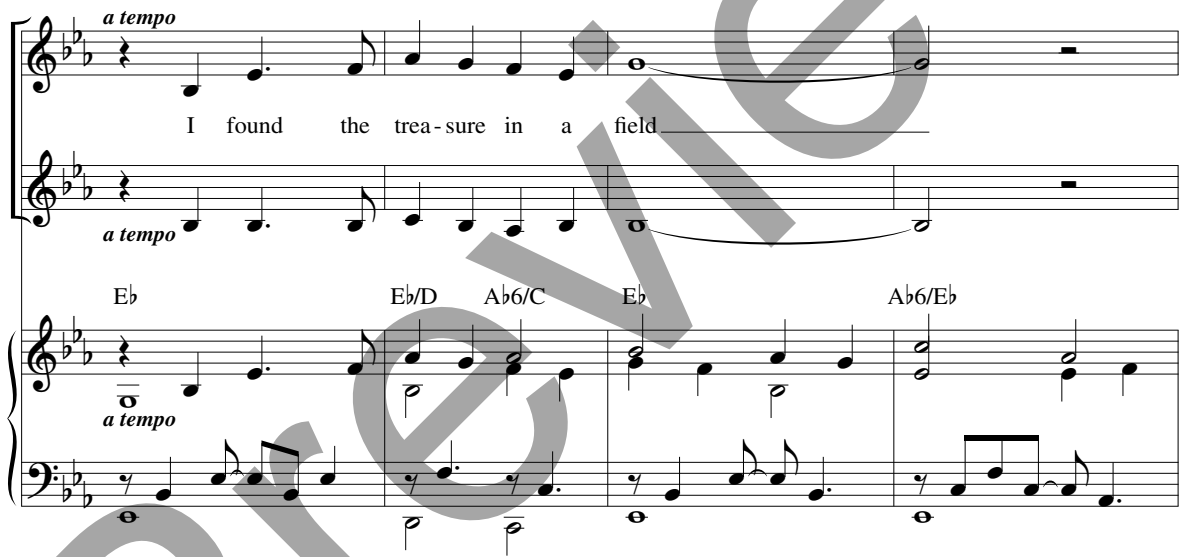
REFRAIN 2

a tempo

I found the trea-sure in a field

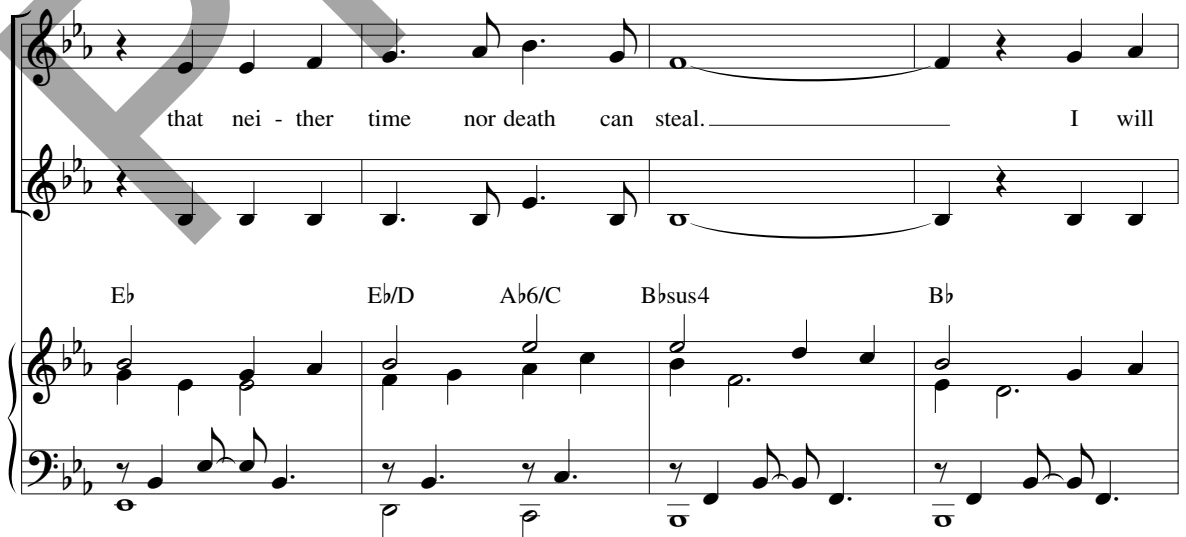
a tempo

E_b *E_b/D* *A_b6/C* *E_b* *A_b6/E_b*



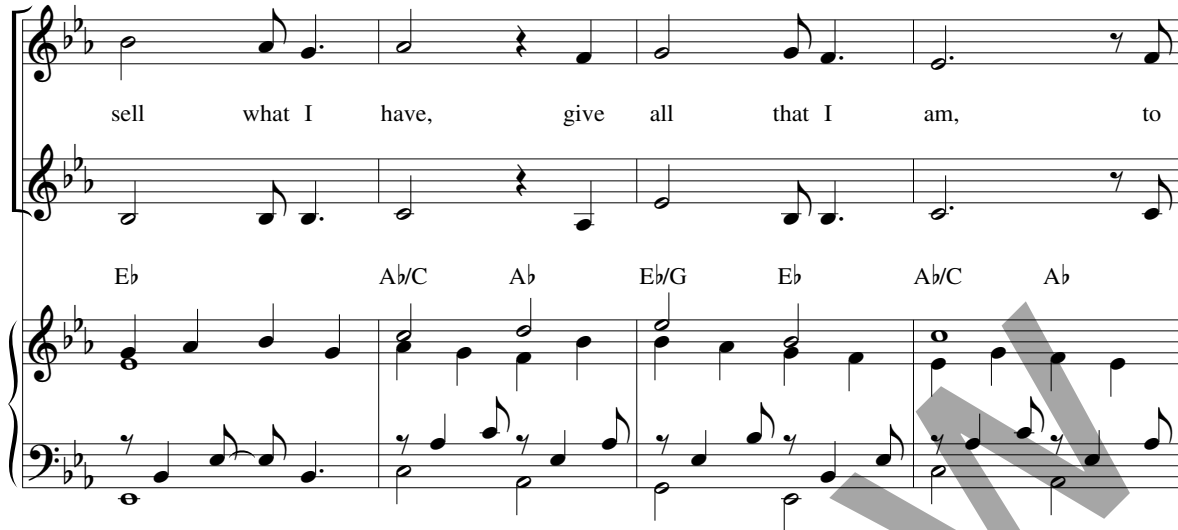
that nei - ther time nor death can steal. I will

E_b *E_b/D* *A_b6/C* *B_bsus4* *B_b*



sell what I have, give all that I am, to

Eb Ab/C Ab Eb/G Eb Ab/C Ab

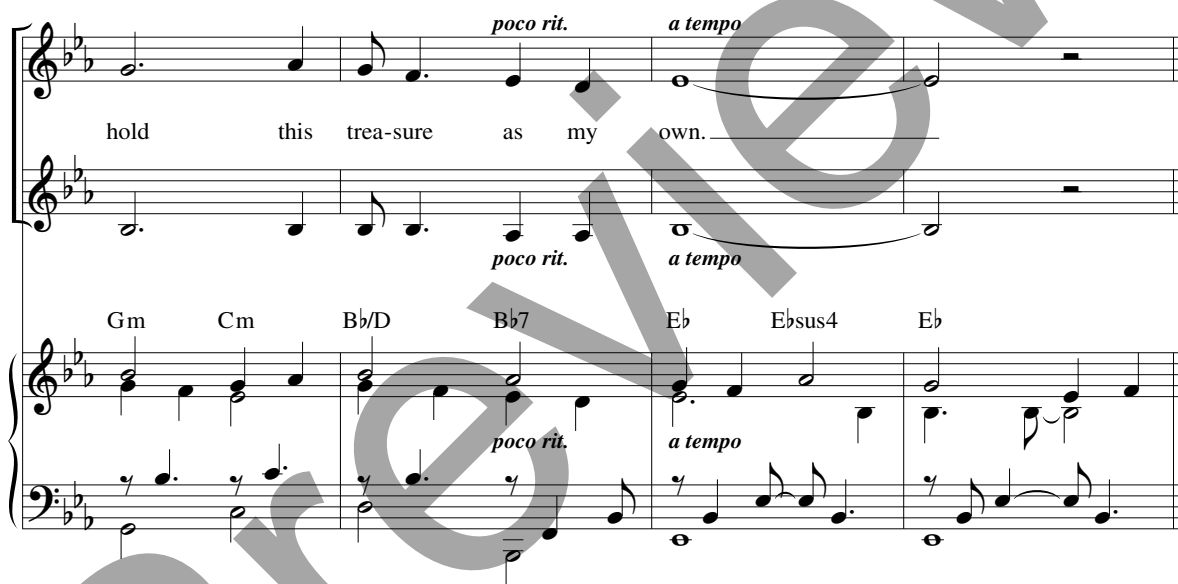


hold this treasure as my own.


poco rit. *a tempo*

poco rit. *a tempo*

Gm Cm Bb/D Bb7 Eb Ebsus4 Eb

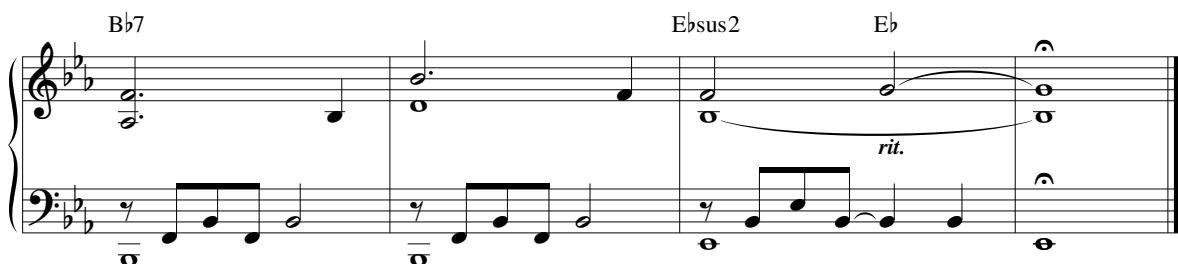


Eb Bb/Eb Ab/Eb Eb



Bb7 Ebsus2 Eb

rit.



Composer Notes

This is a very simple, gentle piece that speaks directly to the Lord and expresses our desire that God be the real treasure in our lives.

The tempo marking of ($\text{♩} = ca. 106$) will be a help in keeping a mood of calm steadiness. The tempo should not be adhered to strictly as slight variations can help give greater feeling to the words of the text. Especially important are the *ritardandos* at the end of each of the verses.

Care should be taken to keep the verses very simple and straightforward. They should be performed by a soloist if at all possible. If no soloist is available, they can be sung by 4–5 members of the choir. They, however, should always be “smaller” than the refrains which are intended to be sung by the whole congregation. The refrains are also a bit more energetic and majestic than the verses.

Once the congregation has learned its part the descant may be added by the sopranos or tenors of the choir to add further excitement and majesty to the refrain.

The guitar accompaniment should be calm and gentle in keeping with the mood of the piece. It is suggested that the song be fingerpicked rather than strummed, since strumming tends to be too harsh and energetic for this piece. The picking pattern given below works very well.

—Dan Schutte

Picking Pattern:

Capo 1: D

A/D

E
B
G
D
A
*D

T

* D tuning

I Found the Treasure

(Guitar/Vocal)

Based on Matthew 13:44, John 6:68

Dan Schutte

INTRO/INTERLUDE (♩ = ca. 106)

Capo 1: (D) (A/D) (G/D) (D) (A7) (G/A)
 Eb Bb/Eb Ab/Eb Eb Bb7 Ab/Bb

(Kbd)

VERSES

(Dsus2) (D) (D) (Em/D) (D)
 Ebsus2 Eb Eb Fm/Eb Eb

1. Lord, to whom can I go? You a -
 2. Je - sus, Lord of my life, I can

(G/D) (A7sus4) (A) (Dsus4) (D) (Em) (A)
 Ab/Eb Bb7sus4 Bb Ebsus4 Eb Fm Bb

1. lone speak the words of life. You a - lone on the earth or in
 2. ask for noth - ing more than to see and be - lieve that my

(D) (A7/C#) (Bm) (Bm/A) (G) (G/F#) (Em7) (Asus4) (A7)
 Eb Bb7/D Cm Cm/Bb Ab Ab/G Fm7 Bbsus4 Bb7

1. heav - en a - bove are my Sav - ior and my Lord.
 2. life lies in you, in the king - dom of my Lord.

1: to Refrain 1
 2: to Refrain 2
rit.

REFRAIN 1

(D) (D/C#) (G6/B) (D) (Dsus2,4) (D) (Dsus2,4) (D)
 Eb Eb/D Ab6/C Eb Ebsus2,4 Eb Ebsus2,4 Eb

a tempo

I found the trea - sure in a field that nei - ther

(D/C#) (G6/B) (Asus4) (A) (D) (G/B)
 Eb/D Ab6/C Bbsus4 Bb Eb Ab/C

time nor death can steal. I will sell what I have, give

(D) (D/C#) (G/B) (D) (A7) (D) (G/D) (D)
 Eb Eb/D Ab/C Eb Bb7 Eb Ab/Eb Eb

all that I am, to hold this trea - sure as my own.

poco rit. *a tempo* *D.C.*

REFRAIN 2

(D) (D/C#) (G6/B) (D) (G6/D) (D)
 Eb Eb/D Ab6/C Eb Ab6/Eb Eb

a tempo

I found the trea - sure in a field _____ that nei - ther

(D/C#) (G6/B) (Asus4) (A) (D) (G/B) (G)
 Eb/D Ab6/C Bbsus4 Bb Eb Ab/C Ab

time nor death can steal. _____ I will sell what I have, give

(D/F#) (D) (G/B) (G) (F#m) (Bm) (A/C#) (A7)
 Eb/G Eb Ab/C Ab Gm Cm Bb/D Bb7

poco rit.

all that I am, _____ to hold _____ this trea - sure as my

(D) (Dsus4) (D) (D) (A/D) (G/D)
 Eb Ebsus4 Eb Eb Bb/Eb Ab/Eb

a tempo

own. _____

(D) (A7) (Dsus2) (D)
 Eb Bb7 Ebsus2 Eb

rit.

Note: The composer suggests the following fingerpicking pattern:

Capo 1: D A/D

r i m r i r i r i m r r i m r

* D tuning

Preview

I Found the Treasure

SOLO INSTRUMENT I & II in C

Dan Schutte

INTRO (♩ = ca. 106)

8

VERSE 1

16

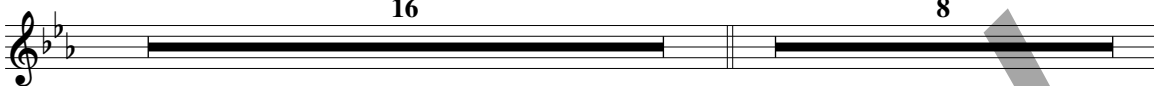


REFRAIN 1

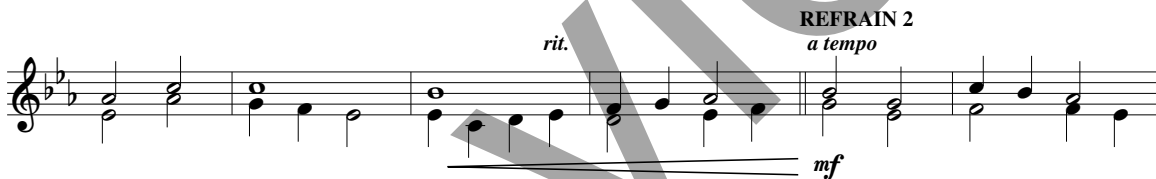
16

INTERLUDE

8



VERSE 2



© 1985, Daniel L. Schutte. Published by OCP, 5536 NE Hassalo, Portland, OR 97213. All rights reserved.

Assembly Edition

I FOUND THE TREASURE Dan Schutte

Verses

1. Lord, to whom can I go? You a - lone speak the
2. Je - sus, Lord of my life, I can ask for

1. words of life. You a - lone on the earth or in
2. noth - ing more than to see and be - lieve that my

1. heav - en a - bove are my Sav - ior and my Lord.
2. life lies in you, in the king - dom of my Lord.

Refrain

I found the trea - sure in a field that nei - ther
time nor death can steal. I will sell what I have, give
all that I am, to hold this trea - sure as my own.

Text based on Matthew 13:44, John 6:68. Text and music © 1985, Daniel L. Schutte.
Published by OCP, 5536 NE Hassalo, Portland, OR 97213. All rights reserved.

For reprint permissions, please visit OneLicense.net or contact us at 1-800-663-1501.

