



OCP MASS SETTINGS

# MASS OF ST. MARY MAGDALENE

SARAH HART

CHORAL

# Mass of St. Mary Magdalene – Choral Edition

Sarah Hart

© 2019, OCP

5536 NE Hassalo, Portland, OR 97213

(503) 281-1191 liturgy@ocp.org ocp.org

Excerpts from the English translation of *The Roman Missal* © 2010, International Commission on English in the Liturgy Corporation (ICEL), 1100 Connecticut Ave. NW, Suite 710, Washington, DC 20036-4101. All rights reserved. Used with permission. The English translation of Alleluia verses 2–4 and Lenten Gospel Acclamation Response and verses 1–5 from the *Lectionary for Mass* © 1969, 1981, 1997, ICEL. All rights reserved. Used with permission.

Alleluia verses 1 and 5 and Lenten Gospel Acclamation verse 6 from the *Lectionary for Mass for Use in the Dioceses of the United States* © 1970, 1997, 1998, Confraternity of Christian Doctrine, Inc. (CCD), 3211 4th St. NE, Washington, DC 20017-1194. All rights reserved. Used with permission.

Published with the approval of the Committee on Divine Worship, United States Conference of Catholic Bishops, 3211 4th St. NE, Washington, DC 20017-1194; USCCB.org.

None of the pages in this book may be reproduced in any way without written permission from the publisher.

## Table of Contents

Lord, Have Mercy . . . . .	3
Kyrie, Eleison . . . . .	4
Glory to God . . . . .	5
Alleluia . . . . .	9
Lenten Gospel Acclamation . . . . .	10
Eucharistic Acclamations	
Holy . . . . .	12
We Proclaim Your Death . . . . .	14
When We Eat This Bread . . . . .	14
Save Us, Savior . . . . .	15
Amen . . . . .	15
Lamb of God . . . . .	16

---

Mass of St. Mary Magdalene	Octavo	PDF Octavo
Piano/Choral Edition . . . . .	ed. 30145573 . . . . .	ed. 30145594
Piano/Vocal Edition . . . . .	ed. 30145574 . . . . .	ed. 30145595
Guitar/Choral Edition . . . . .	ed. 30145575 . . . . .	ed. 30145596
Choral-only Edition . . . . .	ed. 30145572 . . . . .	ed. 30145593

For reprintable Assembly Editions, please visit [OneLicense.net](http://OneLicense.net) or contact us at 1-800-663-1501.

# LORD, HAVE MERCY

(♩ = ca. 96)

*Soprano* 2 *Cantor/Choir* *All*

*Alto*

Lord, have mer - cy. Lord, have

2

*Baritone*

Detailed description: This system shows the first two staves of the musical score. The top staff is for Soprano and Alto, and the bottom staff is for Baritone. The key signature has one flat (B-flat) and the time signature is 3/4. A tempo marking '(♩ = ca. 96)' is at the top left. The Soprano part begins with a fermata over a whole note G4, followed by a half note G4 and a quarter note G4. The Alto part begins with a fermata over a whole note G4, followed by a half note G4 and a quarter note G4. The Baritone part begins with a fermata over a whole note G3, followed by a half note G3 and a quarter note G3. The lyrics 'Lord, have mer - cy. Lord, have' are written below the Soprano and Alto staves.

*Cantor/Choir* *All*

mer - cy. Christ, have mer - cy. Christ, have mer - cy.

Detailed description: This system shows the second and third staves. The top staff is for Cantor/Choir and the bottom staff is for Baritone. The Cantor/Choir part continues with a half note G4 and a quarter note G4, then a half note G4 and a quarter note G4, and finally a half note G4 and a quarter note G4. The Baritone part continues with a half note G3 and a quarter note G3, then a half note G3 and a quarter note G3, and finally a half note G3 and a quarter note G3. The lyrics 'mer - cy. Christ, have mer - cy. Christ, have mer - cy.' are written below the Cantor/Choir staff.

*Cantor/Choir* *All* *rit.*

Lord, have mer - cy. Lord, have mer - cy.

*rit.*

Detailed description: This system shows the fourth and fifth staves. The top staff is for Cantor/Choir and the bottom staff is for Baritone. The Cantor/Choir part continues with a half note G4 and a quarter note G4, then a half note G4 and a quarter note G4, and finally a half note G4 and a quarter note G4. The Baritone part continues with a half note G3 and a quarter note G3, then a half note G3 and a quarter note G3, and finally a half note G3 and a quarter note G3. The lyrics 'Lord, have mer - cy. Lord, have mer - cy.' are written below the Cantor/Choir staff. The system ends with a fermata over a whole note G4 in the Cantor/Choir part and a fermata over a whole note G3 in the Baritone part. The marking 'rit.' is placed below the Baritone staff.

Music: *Mass of St. Mary Magdalene*; Sarah Hart, b. 1968; arr. by Rick Modlin, b. 1966, © 2018, 2019, Sarah Hart.  
Published by OCP. All rights reserved.

# KYRIE, ELEISON

(♩ = ca. 96)

*Soprano* 2 *Cantor/Choir* *All*  
*Alto*  
Ký-ri - e, e - lé - i - son. Ký-ri - e, e -

2  
*Baritone*

*Cantor/Choir* *All*  
lé - i - son. Chri - ste, e - lé - i - son. Chri - ste, e - lé - i - son.

*Cantor/Choir* *All* *rit.*  
Ký-ri - e, e - lé - i - son. — Ký-ri - e, e - lé - i - son.

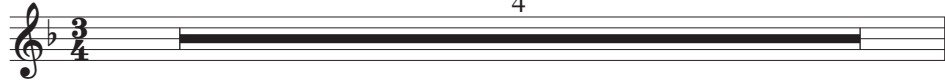
*rit.*

Music: *Mass of St. Mary Magdalene*; Sarah Hart, b. 1968; arr. by Rick Modlin, b. 1966, © 2018, 2019, Sarah Hart.  
Published by OCP. All rights reserved.

# GLORY TO GOD

Intro (♩ = ca. 168/♩. = ca. 56)

4



*Soprano*  
*Alto*  
Glo-ry to God, Glo-ry to God in the high - est,  
*Baritone*

and on earth peace to peo-ple of good will. We

praise you, we bless you, we a-dore you, we

glo-ri-fy you, we give you thanks for your great

glo - ry, Lord God, heav-en - ly King,

GLORY TO GOD, cont. (2)

O God, al - might - y Fa - ther. Lord Je - sus

Christ, On - ly Be - got - ten Son, Lord God,

Lamb of God, Son of the Fa - ther,

you take a - way the sins of the world, have mer - cy on

us; you take a - way the sins of the world, re - ceive

our prayer; you are seat - ed at the right hand of the

Fa - ther, have mer - cy on us.

For you a - lone are the Ho - ly One, you a - lone are the Lord,

you a - lone are the Most High, Je - sus

Christ, with the Ho - ly Spir - it, in the glo - ry of

God the Fa - ther. A - men, a - men.

*molto rit.*

Text © 2010, ICEL. All rights reserved. Used with permission.  
 Music: *Mass of St. Mary Magdalene*; Sarah Hart, b. 1968; arr. by Rick Modlin, b. 1966, © 2018, 2019, Sarah Hart.  
 Published by OCP. All rights reserved.

Preview



# ALLELUIA

Intro: Joyous (♩ = ca. 58)

Refrain: 1st time: Cantor, All repeat; thereafter: All

4

Soprano

Alto

Al - le - lu - ia. Al - le - lu - ia.

4

Baritone

Al - le - lu - ia. Al - le - lu - ia. Al - le - lu - ia.

To Refrain/Verse

Final

Fine

Al - le - lu - ia. ia.

Verses (Common Verses for Ordinary Time)

1. Speak, O Lord, your ser - vant is list-'ning; 7
2. 7 Your words, Lord, are Spir - it and life; 7
3. 7 My sheep hear my voice, says the Lord; I
4. 7 O - pen our hearts, O Lord, to
5. Re - main faith - ful un - til death, and

1. you have the words of ev - er - last - ing life.
2. you have the words of ev - er - last - ing life.
3. know them, and they fol - low me.
4. lis - ten to the words of your Son.
5. I will give you the crown of life.

Text: Verses 1 & 5 © 1970, 1997, 1998, 2002, CCD. All rights reserved. Used with permission.

Verses 2-4 © 1969, 1981, 1997, ICEL. All rights reserved. Used with permission.

Music: *Mass of St. Mary Magdalene*; Sarah Hart, b. 1968; arr. by Rick Modlin, b. 1966, © 2018, 2019, Sarah Hart.

Published by OCP. All rights reserved.

# LENTEN GOSPEL ACCLAMATION

Intro: Joyous (♩. = ca. 58)  
4

Refrain: 1st time: Cantor, All repeat; thereafter: All

Soprano  
Alto  
Baritone

Glo - ry to you, Word of God,

Lord Je - sus Christ! Glo - ry to you, Word of God,

To Refrain/Verse | Final

Lord Je - sus Christ! Christ!

Fine

Verses



Ash Wed. ♪ ♪ ♪ If \_\_\_\_\_ to - day \_\_\_\_\_ you  
 1 ABC ♪ ♪ ♪ One does not live \_\_\_\_\_ on  
 2 AC From the shin - ing cloud \_\_\_\_\_ the Fa - ther's  
 3 C ♪ ♪ ♪ Re - pent, \_\_\_\_\_ says \_\_\_\_\_ the  
 4 A ♪ ♪ ♪ I am the light of the world, says the  
 5 C ♪ ♪ ♪ E - ven now, says the Lord, \_\_\_\_\_ re -



Ash Wed. hear \_\_\_\_\_ his \_\_\_\_\_ voice, \_\_\_\_\_ ♪ har - den  
 1 ABC bread a - lone, \_\_\_\_\_ but on ev - ery word that comes  
 2 AC voice \_\_\_\_\_ is heard: \_\_\_\_\_ ♪ This \_\_\_\_\_ is my \_\_\_\_\_ be -  
 3 C Lord; \_\_\_\_\_ ♪ the king - dom \_\_\_\_\_ of \_\_\_\_\_  
 4 A Lord; \_\_\_\_\_ ♪ who - ev - er fol - lows me \_\_\_\_\_ ♪ will  
 5 C turn \_\_\_\_\_ to me with your whole \_\_\_\_\_ heart; \_\_\_\_\_ ♪ for



Ash Wed. not \_\_\_\_\_ your \_\_\_\_\_ hearts. \_\_\_\_\_  
 1 ABC forth from the mouth \_\_\_\_\_ of God. \_\_\_\_\_  
 2 AC lov - ed Son, \_\_\_\_\_ ♪ hear \_\_\_\_\_ him.  
 3 C heav - en is \_\_\_\_\_ at hand. \_\_\_\_\_  
 4 A have \_\_\_\_\_ the light \_\_\_\_\_ of life. \_\_\_\_\_  
 5 C I \_\_\_\_\_ am gra - cious and mer - ci - ful.

Text: Refrain and verses 1-5 © 1969, 1981, 1997, ICEL. All rights reserved. Used with permission.  
 Verse 6 © 1970, 1997, 1998, CCD. All rights reserved. Used with permission.  
 Music: *Mass of St. Mary Magdalene*; Sarah Hart, b. 1968; arr. by Rick Modlin, b. 1966, © 2018, 2019, Sarah Hart.  
 Published by OCP. All rights reserved.

# HOLY

Intro (♩ = ca. 168/♩. = ca. 56)

4 *Soprano*

4 *Alto*

4 *Baritone*

Ho - ly, Ho - ly,

Ho - ly Lord God of hosts. Heav -

en - and earth are full of your glo - ry.

Ho - san - na in the high -

est. Bless - ed is he who

comes in the name of the Lord. Ho - san - na

in the high - est.

Text © 2010, ICEL. All rights reserved. Used with permission.  
Music: *Mass of St. Mary Magdalene*; Sarah Hart, b. 1968; arr. by Rick Modlin, b. 1966, © 2018, 2019, Sarah Hart.  
Published by OCP. All rights reserved.

Preview

## WE PROCLAIM YOUR DEATH

(♩ = ca. 88)

2 *Soprano*  
*Alto*

We pro-claim your Death, O Lord, and pro-fess your

2  
*Baritone*

Res-ur-rec - tion un-til you come a - gain.

Text © 2010, ICEL. All rights reserved. Used with permission.  
Music: *Mass of St. Mary Magdalene*; Sarah Hart, b. 1968; arr. by Rick Modlin, b. 1966, © 2018, 2019, Sarah Hart.  
Published by OCP. All rights reserved.

## WHEN WE EAT THIS BREAD

(♩ = ca. 90)

*Soprano*  
*Alto*

When we eat this Bread and drink this Cup, we pro-

*Baritone*

claim your Death, O Lord, un-til you come a - gain.

Text © 2010, ICEL. All rights reserved. Used with permission.  
Music: *Mass of St. Mary Magdalene*; Sarah Hart, b. 1968; arr. by Rick Modlin, b. 1966, © 2018, 2019, Sarah Hart.  
Published by OCP. All rights reserved.

# SAVE US, SAVIOR

(♩ = ca. 90)

*Soprano*  
*Alto*  
Save us, Sav-ior of the world, for by your  
*Baritone*

Cross and Res-ur - rec-tion you have set us free.

Text © 2010, ICEL. All rights reserved. Used with permission.  
Music: *Mass of St. Mary Magdalene*; Sarah Hart, b. 1968; arr. by Rick Modlin, b. 1966, © 2018, 2019, Sarah Hart.  
Published by OCP. All rights reserved.

## AMEN

(♩ = ca. 104)

*Soprano*  
*Alto*  
A - men, a - men, a -  
*Baritone*

men, a - men, a - men.

Music: *Mass of St. Mary Magdalene*; Sarah Hart, b. 1968; arr. by Rick Modlin, b. 1966, © 2018, 2019, Sarah Hart.  
Published by OCP. All rights reserved.

# LAMB OF GOD

Intro (♩ = 92-96)

4 *Soprano*



4 *Alto*




Lamb of God, you take a-way the sins of the

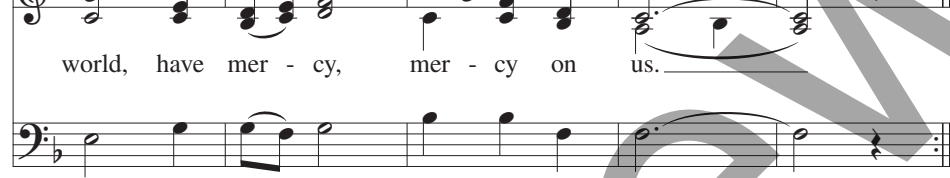
4 *Baritone*




1, 2




world, have mer - cy, mer - cy on us.



Final



world, grant us, grant us peace.



Music: *Mass of St. Mary Magdalene*; Sarah Hart, b. 1968; arr. by Rick Modlin, b. 1966, © 2018, 2019, Sarah Hart.  
Published by OCP. All rights reserved.

