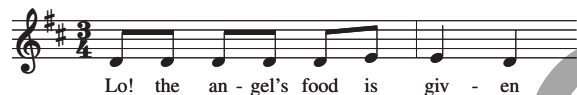


Corpus Christi Sequence

James Poppleton

Edition # 30145950



Intro

|D Em |Bsus4 Bm |G |Asus4 A ||

Verse 1

D Em Bsus4 Bm
Lo! the angel's food is giv - en
G Asus4 A
To the pilgrim who has striv - en;

Verse 2

D Em Bsus4 Bm
See the children's bread from heav - en,
G Asus4 A
which on dogs may not be spent.

Verse 3

Em7 A
Truth the ancient types fulfilling,
D G
Isaac bound, a victim willing,

Verse 4

Em7 A
Paschal lamb, its lifeblood spilling,
D G
manna to the fathers sent.

Verse 5

D Em Bsus4 Bm
Very bread, good shepherd, tend us,
G Asus4 A
Jesu, of your love befriend us,

Verse 6

D Em Bsus4 Bm
You refresh us, you defend us,
G Asus4 A
Your eternal goodness send us

Verse 7

Em7 A
In the land of life to see.
D G
You who all things can and know,

Verse 8

Em7 A
Who on earth such food bestow,
D G
Grant us with your saints, though lowest,

Verse 9

Em7 A
Where the heavenly feast you show,
D G
Fellow heirs and guests to be.
Bm Gadd9 Dadd9 Asus4
A - men. Allelu - ia.
Bm Gadd9 Dadd9 Asus4 A
A - men. Allelu - ia.

Gospel Acclamation

D Em Bsus4 Bm G Asus4 A
Alleluia, alle - lu - ia. Alleluia, alle-lu - ia.
D Em Bsus4 Bm G Asus4 A
Alleluia, alle - lu - ia. Alleluia, alle-lu - ia.

Gospel Verse

D Em7
I am the living bread that came down from heaven,
Bm
says the Lord;
G Asus4 A
whoever eats this bread will live for - ev - er.

Gospel Acclamation

D Em Bsus4 Bm
Alleluia, alle - lu - ia.
G Asus4 A Asus4 A D
Alleluia, alle-lu - ia.

Text: *Lauda Sion Salvatorem*, 13th cent.; Poetic Sequence for Corpus Christi, fr. *The Roman Missal* © 1964, National Catholic Welfare Conference, Inc. (now US Conference of Catholic Bishops). All rights reserved. Used with permission. Gospel verse text © 1970, 1997, 1998, Confraternity of Christian Doctrine, Inc. (CCD). All rights reserved. Used with permission. Music © 2015, James Poppleton. Published by OCP, 5536 NE Hassalo, Portland, OR 97213. All rights reserved.