

HOLY

INTRO (♩ = ca. 168 / ♪ = ca. 56)

Capo 3: (G)
B♭

(Bm)
Dm

(G)
B♭



(Pno)

Ho - ly, Ho - ly,

(D)
F

(A/C#)
C/E

(Bm)
Dm

(G)
B♭

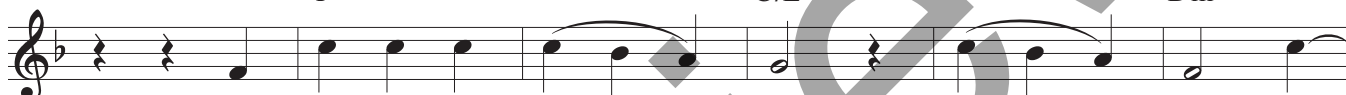


Ho - ly Lord God of hosts. Heav - en and earth

(D)
F

(A/C#)
C/E

(Bm)
Dm



are full of your glo - ry. Ho - san - na

(F#m/A)
Am/C

(G)
B♭

(A7sus4)
C7sus4

(Dsus4)
Fsus4

(D)
F

(Bm)
Dm



in the high - est. Bless - ed is

(G)
B♭

(D)
F

(A/C#)
C/E



he who comes in the name of the Lord. Ho -

(Bm)
Dm

(F#m/A)
Am/C

(G)
B♭

(A7sus4)
C7sus4

(D)
F

(Dsus4)
Fsus4

(D)
F



san - na in the high - est.

Text © 2010, ICEL. All rights reserved. Used with permission.

Music: *Mass of St. Mary Magdalene*; Sarah Hart, b. 1968, © 2018, 2019, Sarah Hart. Published by OCP. All rights reserved.