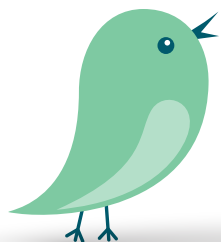


Choral  
Series  
for Young  
People



**Sleep, Sleep, Sleep**  
(Jesus Lullaby)

John Burland

# Sleep, Sleep, Sleep

(Jesus Lullaby)

Based on Luke 2:6-7, 11-13

John Burland  
Arr. by Scott Soper

### INTRO *Tenderly* (♩ = ca. 82)

Keyboard

D A/D D A/D

G D/F# Em7 A

### VERSES\*

#### Descant

Ah, \_\_\_\_\_ sleep, sleep.

#### Melody

1. Ba - by Je - sus in a man - ger lays, sleep, sleep, sleep. Ba-by
2. Ba - by Je - sus, born in Beth - le - hem, sleep, sleep, sleep. Ba-by
3. Ba - by Je - sus, light of all the world, sleep, sleep, sleep. Ba-by
4. Ba - by Je - sus, gift from God a - bove, sleep, sleep, sleep. Ba-by
5. Ba - by Je - sus in a man - ger lays, sleep, sleep, sleep. Ba-by

#### Harmony

G/D D G D A

© 2003, 2023, John Burland. Published by OCP. All rights reserved. This edition © 2024.

\*An alternative keyboard accompaniment can be found on p. 6.

Ah, \_\_\_\_\_ sleep, sleep.

1. Je - sus, bring - ing peace for us, sleep, sleep, sleep.  
 2. Je - sus, yes, the prom - ised one, sleep, sleep, sleep.  
 3. Je - sus, show - ing us the way, sleep, sleep, sleep.  
 4. Je - sus, friend to ev - ery - one, sleep, sleep, sleep.  
 5. Je - sus, bring - ing joy to all, sleep, sleep, sleep.

G/D D G D/A A D

## REFRAIN

Moth - er Mar - y watch - ing o - ver you, Jo - seph proud - ly by your

Moth - er Mar - y watch - ing o - ver you, Jo - seph proud - ly by your

D/F# G D A

side; ah, \_\_\_\_\_ an-gels sing on  
 side; gath-er shep - herds, gath-er all you kings, as an-gels sing on  
 D G/D D G D/A A7  
 (rit. final time)

Detailed description: This system contains three staves. The top staff is a vocal line in G major with lyrics: "side; ah, \_\_\_\_\_ an-gels sing on". The middle staff is a vocal line with lyrics: "side; gath-er shep - herds, gath-er all you kings, as an-gels sing on". The bottom staff is a piano accompaniment with chords D, G/D, D, G, D/A, and A7. A large watermark "PREVIEW" is overlaid on the right side of the page.

1-4 D.S. Final  
 high. high.  
 high. high.  
 1-4 D D Final  
 D.S. D

Detailed description: This system contains three staves. The top staff is a vocal line with lyrics "high. high." and markings "1-4", "D.S.", and "Final". The middle staff is a vocal line with lyrics "high. high." and markings "D.S.". The bottom staff is a piano accompaniment with chords D and D. A large watermark "PREVIEW" is overlaid on the right side of the page.

# Sleep, Sleep, Sleep

(Jesus Lullaby)

(Guitar/Vocal)

Based on Luke 2:6-7, 11-13

John Burland

**INTRO** *Tenderly* (♩ = ca. 82)

D A/D D A/D

(Kbd)

G D/F# Em7 A

**VERSES**

G/D D G D A

1. Ba-by Je - sus in a man-ger lays, sleep, sleep, sleep. Ba-by
2. Ba-by Je - sus, born in Beth - le - hem, sleep, sleep, sleep. Ba-by
3. Ba-by Je - sus, light of all the world, sleep, sleep, sleep. Ba-by
4. Ba-by Je - sus, gift from God a - bove, sleep, sleep, sleep. Ba-by
5. Ba-by Je - sus in a man-ger lays, sleep, sleep, sleep. Ba-by

G/D D G D/A A D

1. Je - sus, bring - ing peace for us, sleep, sleep, sleep.
2. Je - sus, yes, the prom - ised one, sleep, sleep, sleep.
3. Je - sus, show - ing us the way, sleep, sleep, sleep.
4. Je - sus, friend to ev - ery - one, sleep, sleep, sleep.
5. Je - sus, bring - ing joy to all, sleep, sleep, sleep.

**REFRAIN**

D/F# G D A

Moth - er Mar - y watch - ing o - ver you, Jo - seph proud - ly by your

D G/D D G D/A (rit. final time) A7

side; gath - er shep - herds, gath - er all you kings, as an - gels sing on —

1-4 D D.S. Final D

high. high.

# Sleep, Sleep, Sleep

## (Jesus Lullaby)

(Alternative Keyboard Accompaniment)

Based on Luke 2:6-7, 11-13

John Burland

Acc. by Scott Soper

INTRO *Tenderly* (♩ = ca. 82)

Keyboard

D A/D D A/D

G D/F# Em7 A

### VERSES

1. Ba-by Je-sus in a man-ger lays, sleep, sleep, sleep. Ba-by  
 2. Ba-by Je-sus, born in Beth-le-hem, sleep, sleep, sleep. Ba-by  
 3. Ba-by Je-sus, light of all the world, sleep, sleep, sleep. Ba-by  
 4. Ba-by Je-sus, gift from God a-bove, sleep, sleep, sleep. Ba-by  
 5. Ba-by Je-sus in a man-ger lays, sleep, sleep, sleep. Ba-by

G D G D A

© 2003, 2023, John Burland. Published by OCP. All rights reserved.

1. Je - sus, bring - ing peace for us, sleep, sleep, sleep.  
 2. Je - sus, yes, the prom - ised one, sleep, sleep, sleep.  
 3. Je - sus, show - ing us the way, sleep, sleep, sleep.  
 4. Je - sus, friend to ev - ery - one, sleep, sleep, sleep.  
 5. Je - sus, bring - ing joy to all, sleep, sleep, sleep.

G D G D/A A D

## REFRAIN

Moth - er Mar - y watch - ing o - ver you, Jo - seph proud - ly by your

D/F# G D A/C#

side; gath - er shep - herds, gath - er all you kings, as an - gels sing on —

(rit. final time)

D G D G D/A A7

(rit. final time)

1-4 D.S. Final

high. high.

1-4 D D.S. Final D

# Assembly Edition

## SLEEP, SLEEP, SLEEP (Jesus Lullaby)

John Burland



1. Ba - by Je - sus in a man - ger lays,
2. Ba - by Je - sus, born in Beth - le - hem,
3. Ba - by Je - sus, light of all the world,
4. Ba - by Je - sus, gift from God a - bove,
5. Ba - by Je - sus in a man - ger lays,



1. sleep, sleep, sleep. Ba - by Je - sus, bring - ing
2. sleep, sleep, sleep. Ba - by Je - sus, yes, the
3. sleep, sleep, sleep. Ba - by Je - sus, show - ing
4. sleep, sleep, sleep. Ba - by Je - sus, friend to
5. sleep, sleep, sleep. Ba - by Je - sus, bring - ing



1. peace for us, sleep, sleep, sleep.
2. prom - ised one, sleep, sleep, sleep.
3. us the way, sleep, sleep, sleep.
4. ev - ery - one, sleep, sleep, sleep.
5. joy to all, sleep, sleep, sleep.



Moth - er Mar - y watch - ing o - ver you, Jo - seph



proud - ly by your side; gath - er shep - herds, gath - er



all you kings, as an - gels sing on high.

Text based on Luke 2:6-7, 11-13. Text and music © 2003, 2023, John Burland. Published by OCP. All rights reserved.

For reprint permissions, please visit [OneLicense.net](http://OneLicense.net) or contact us at 1-800-663-1501.

