



# Advent Entrance Antiphons and Processional

Kathleen M. Basi

## ANTIPHON 1: First Sunday of Advent (Psalm 24:1-3)

Cantor

1. To you, I lift up my soul, O my God.

Bm

Piano

This system contains the first two lines of music. The Cantor part is a single melodic line in G major. The Piano part consists of two staves with chords and a simple bass line. A large 'PREVIEW' watermark is overlaid on the page.

1. In you, I have trusted; let me not be put to shame. Nor let my enemies exult o-ver me;

Bm

Bm

This system contains the next two lines of music. The Cantor part continues the melody. The Piano part provides accompaniment with chords and a bass line. A large 'PREVIEW' watermark is overlaid on the page.

1. and let none who hope in you be put \_\_\_\_\_ to shame. \_\_\_\_\_

Em/B

B(no3) F#m7 Bm F#m7

to Processional Refrain (pg. 4)

to Processional Refrain (pg. 4)

(♩ = ca. 72)

This system contains the final line of music and the beginning of the processional refrain. The Cantor part has a long note followed by a rest. The Piano part has a complex chord progression. A large 'PREVIEW' watermark is overlaid on the page.



ANTIPHON 2: Second Sunday of Advent (Isaiah 30:19, 30)

Cantor

2. O peo-ple of Sion, be-hold, the Lord will come to save the nations,

Piano

Bm Bm

2. and the Lord will make the glo-ry of his voice heard

Piano

Em/B

2. in the joy of your heart.

to Processional Refrain (pg. 4)

Piano

Bm B(no3) F#m7 Bm F#m7

to Processional Refrain (pg. 4)

(♩ = ca. 72)

ANTIPHON 3: Third Sunday of Advent (Philippians 4:4-5)

Cantor

3. Rejoice in the Lord al-ways; a-gain I say, re-joice.

Piano

B B

(♩ = ca. 72)

to Processional Refrain (pg. 4)

3. Indeed, the Lord is near.

Em/B B(no3) F#m7 Bm F#m7

to Processional Refrain (pg. 4)

**ANTIPHON 4: Fourth Sunday of Advent (Isaiah 45:8)**

Cantor

4. Drop down dew from above, you heavens, and let the clouds rain down the Just One;

Bm Bm

Piano

(♩ = ca. 72)

to Processional Refrain (pg. 4)

4. let the earth be opened and bring forth a Saviour.

Em/B B(no3) F#m7 Bm F#m7

to Processional Refrain (pg. 4)

**PROCESSIONAL REFRAIN: All**

**Soprano/Alto**

Come now, O Lord, come! Come in your pow'r and

**Tenor/Bass**

**Bm F#m7 Bm F#m7 Bm F#m7**

glo - ry. Love un - bound - ed, love un - daunt - ed,

**Bm F#m7 Em Gmaj7 A7**

**To Verse** **Final** *Fine*

come! 4. The

**B(no3) F#m7 To Verse Bm A Final Bm F#m7 B(no3) Fine**

## VERSES

## Melody

## Harmony

Adv. 1 Signs in the moon and stars — Call us to wake from slum - ber 7  
 Adv. 2 Voice in the des - ert, cry! — Call us to be re - newed. — 7  
 Adv. 3 Say to the faint of heart: — "Cour-age, be not a - fraid! — 7  
 Adv. 4 Vir - gin shall bear a child, — God with us, love made hu - man. Dis -

Gmaj7 A Bsus4 Bm F#m Gmaj7 A D D/C#

*D.S. al fine*

1. E - ven now, the Lord is draw - ing near. —  
 2. "Make a way for God with - in your heart." —  
 3. Here is God, who comes in pow'r to save." —  
 4. pel our dark - ness; come, Em - man - u - el! —

Bm Gmaj7 Em9 A7 B(no3) F#m7 Bm F#m7 *D.S. al fine*

## Composer Notes

The surge in interest in using the prescribed Antiphons for Sunday celebrations of the Eucharist presents both an opportunity and a challenge to communities and music ministries. We're accustomed to beginning Mass with a communal song; what do we do with this short, simple verse that isn't long enough, by itself, to accompany the procession?

I wrote the Advent Antiphons and Entrance as a way to tie the Entrance Antiphon to the pattern our communities are familiar with. In this setting, a cantor intones the antiphon of the day as a chanted call to worship. The instruments then segue into an opening song with a refrain that remains consistent from week to week, with a verse specific to each week of the season. Antiphon, refrain, the verse of the week, refrain: a compact and unified entrance. In consideration of the season, I've also kept the arrangement simple: 2-part choir, piano and guitar chords. I hope that this structure will allow communities to sink deeper into the Scriptures of the day while still participating full-throated in assembly song.

—Kathleen Basi

Advent Entrance Antiphons and Processional

# Advent Entrance Antiphons and Processional

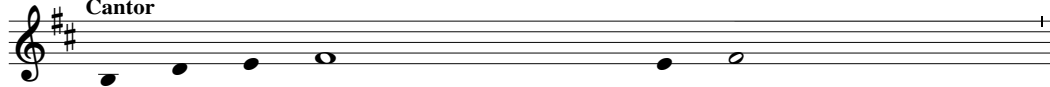
(Guitar/Vocal)

Kathleen M. Basi

## ANTIPHON 1: First Sunday of Advent (Psalm 24:1-3)

Capo 2: (Am)

Bm  
Cantor



1. To you, I lift up my soul, O my God.

(Am)  
Bm

(Am)  
Bm



1. In you, I have trusted; let me not be put to shame. Nor let my enemies exult o-ver me;

(Dm/A)  
Em/B

(♩ = ca. 72)

(A(no3)) (Em7) (Am) (Em7)  
B(no3) F#m7 Bm F#m7



1. and let none who hope in you be put \_\_\_\_\_ to shame. \_\_\_\_\_

## ANTIPHON 2: Second Sunday of Advent (Isaiah 30:19, 30)

(Am)  
Bm  
Cantor

(Am)  
Bm

(Dm/A)  
Em/B



2. O peo-ple of Sion, be-hold, the Lord will come to save\_\_ the nations, and the Lord will make

(♩ = ca. 72)

(Am)  
Bm

(A(no3)) (Em7) (Am) (Em7)  
B(no3) F#m7 Bm F#m7



2. the glo-ry of his voice heard in\_\_ the joy of\_\_ your\_\_ heart. \_\_\_\_\_

## ANTIPHON 3: Third Sunday of Advent (Philippians 4:4-5)

(A)  
B  
Cantor

(A)  
B



3. Rejoice in the Lord al- ways; a- gain I say, \_\_ re - joice.

(♩ = ca. 72)

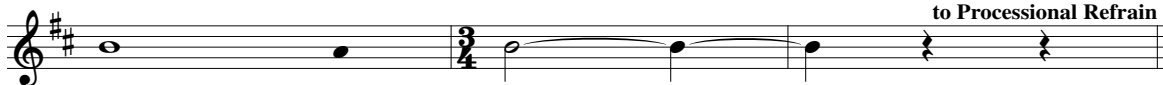
(Dm/A)  
Em/B

(A(no3))  
B(no3)

(Em7)  
F#m7

(Am)  
Bm

(Em7)  
F#m7



3. Indeed, the Lord is near. \_\_\_\_\_

## ANTIPHON 4: Fourth Sunday of Advent (Isaiah 45:8)

(Am) (Am)  
Bm Bm  
Cantor

4. Drop down dew from above, you heavens, and let the clouds rain down the Just One;

(Dm/A) (A(no3)) (Em7) (Am) (Em7)  
Em/B B(no3) F#m7 Bm F#m7

*(♩ = ca. 72)*

to Processional Refrain

4. let the earth be opened and bring forth a Sav-ior.

## § PROCESSIONAL REFRAIN: All

(Am) (Em7) (Am) (Em7) (Am) (Em7) (Am) (Em7) (Dm)  
Bm F#m7 Bm F#m7 Bm F#m7 Bm F#m7 Em

Come now, O Lord, come! Come in your pow'r and glo-ry. Love un-bound-ed,

(Fmaj7) (G7) (A(no3)) (Em7) (Am) (G) (Final) (Am) (Em7) (A(no3))  
Gmaj7 A7 B(no3) F#m7 Bm A Bm F#m7 B(no3) *Fine*

love un-daunt-ed, come! 4. The

## VERSES

(Fmaj7) (G) (Asus4) (Am) (Em7) (Fmaj7) (G) (C) (C/B)  
Gmaj7 A Bsus4 Bm F#m Gmaj7 A D D/C#

Adv. 1 Signs in the moon and stars Call us to wake from slum-ber 7  
Adv. 2 Voice in the des-ert, cry! Call us to be re-newed. 7  
Adv. 3 Say to the faint of heart: "Cour-age, be not a-fraid! 7  
Adv. 4 Vir-gin shall bear a child, God with us, love made hu-man. Dis -

(Am) (Fmaj7) (Dm9) (G7) (A(no3)) (Em7) (Am) (Em7)  
Bm Gmaj7 Em9 A7 B(no3) F#m7 Bm F#m7

*D.S. al fine*

1. E - ven now, the Lord is draw - ing near.  
2. "Make a way for God with - in your heart."  
3. Here is God, who comes in pow'r to save."  
4. pel our dark - ness; come, Em - man - u - el!

## Assembly Edition

**ADVENT ENTRANCE ANTIPHONS AND PROCESSIONAL**

Kathleen M. Basi

Antiphon: Cantor      Processional Refrain: All

Come now, O Lord, come! Come in your pow'r and

glo-ry. Love un-bound - ed, love un-daunt-ed, come!      4. The

Verses

**Adv. 1** Signs in the moon and stars      Call us to wake from slum-ber  
**Adv. 2** Voice in the des - ert, cry!      Call us to be re-newed.  
**Adv. 3** Say to the faint of heart: "Cour-age, be not a - fraid!  
**Adv. 4** Vir-gin shall bear a child,      God with us, love made hu - man.

to Processional Refrain

1. ♪ E - ven now, the Lord is draw - ing near.
2. ♪ "Make a way for God with - in your heart."
3. ♪ Here is God, who comes in pow'r to save."
4. Dis - pel our dark - ness; come, Em-man - u - e!

© 2025, Kathleen M. Basi. Published by OCP. All rights reserved.

For reprint permissions, please visit [OneLicense.net](http://OneLicense.net) or contact us at 1-800-663-1501.

