

Tomad y Comed

70713-Z3

INSTRUMENTO en Do

Mariano Fuertes
Arreglo de Scott Soper

INTRO (♩ = ca. 105)



ESTRIBILLO

© 2003, 2007, Mariano Fuertes y San Pablo Compañía, SSP. Derechos reservados.
Administradora exclusiva en EE.UU. y Canadá: OCP, 506 NE Hassalo, Portland, OR 97213.

Nota: Cualquiera de las tres melodías se puede tocar con el estribillo y las estrofas.
Si hay más de un instrumento, las melodías se pueden tocar en conjunto.

ESTROFAS 1-3

The image displays a musical score for the piece 'TOMAD Y COMED' (Instrumento en Do), continuing from page 2. The score is titled 'ESTROFAS 1-3' and consists of three staves of music. Each staff begins with a treble clef and a key signature of one sharp (F#). The music is written in a single melodic line. The first staff contains the first two measures of the first phrase. The second staff contains the next two measures. The third staff contains the final two measures, each ending with a double bar line and the marking 'al §'. A large, bold, black watermark with the word 'SAMPLE' is oriented vertically across the center of the page, overlapping the musical notation.

Tomad y Comed

70713-Z3

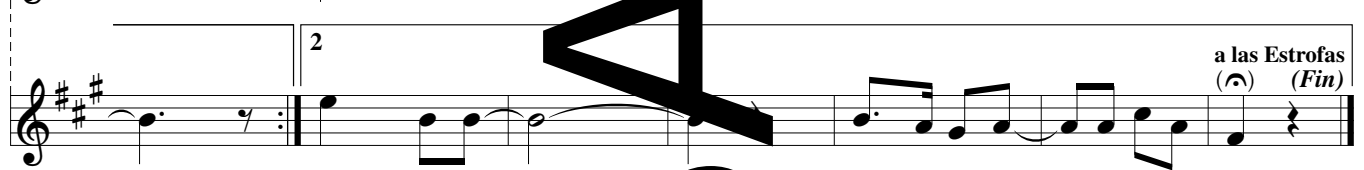
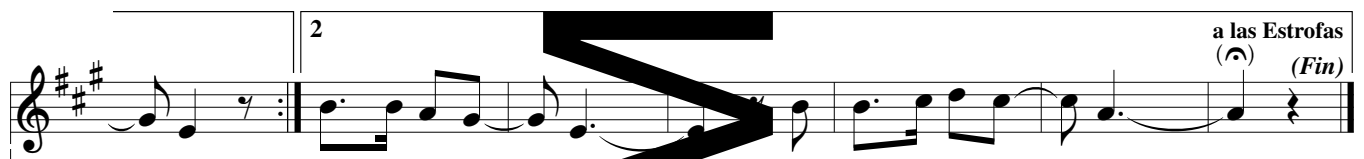
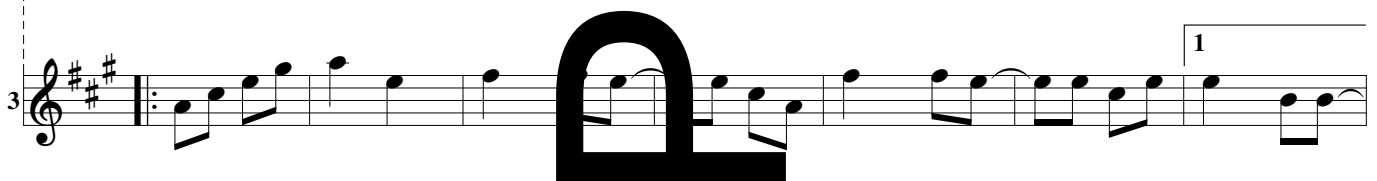
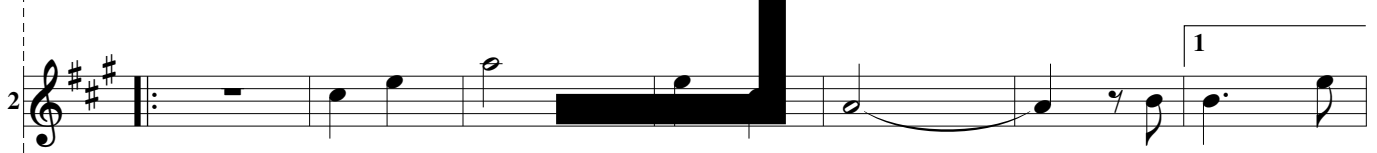
INSTRUMENTO en Sib

Mariano Fuertes
Arreglo de Scott Soper

INTRO (♩ = ca. 105)



ESTRIBILLO



© 2003, 2007, Mariano Fuertes y San Pablo Comunicación, SSP. Derechos reservados.
Administradora exclusiva en el U.S. y Canadá: OCP, 5005 NE Hassalo, Portland, OR 97213.

Nota: Se puede tocar cualquiera de las tres melodías del estrillo y las estrofas, cambiando libremente entre ellas.
Si hay más de un instrumento, las melodías se pueden tocar...

ESTROFAS 1-3

The image displays a musical score for three stanzas of the song 'Tomad y comed'. The score is written in treble clef with a key signature of three sharps (F#, C#, G#). The music consists of three staves per stanza, with a dashed vertical line on the left side of the first two staves of each stanza. The lyrics 'ESTROFAS 1-3' are written vertically in large, bold, black letters across the center of the page, overlapping the musical staves. The first stanza ends with a double bar line and the marking 'al §'. The second and third stanzas also end with a double bar line and the marking 'al §'.