

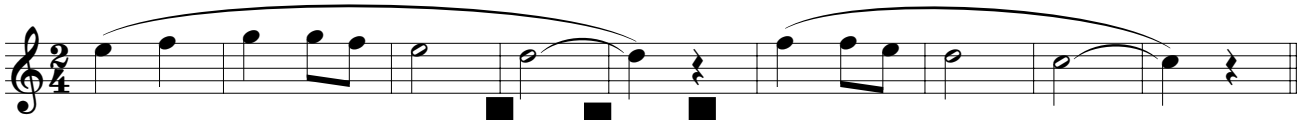
El Señor Nos Invita

70717-Z3

INSTRUMENTO en Do

Carmelo Erdozáin
Arreglo de Scott Soper

INTRO (♩ = ca. 56)



ESTROFAS 1-4

© 2003, 2005 Carmelo Erdozáin Gil. Todos los derechos reservados.
Administradora exclusiva en Estados Unidos y Canadá: OCP, 5006 NE Hassalo, Portland, OR 97213.

Nota: Cualquiera de las tres melodías se puede tocar con las es.
Si hay más de un instrumento, las melodías se pueden tocar juntas.

The image shows a musical score for the piece "El Señor nos invita" (Instrumento en Do), continuation (2). The score is written for three staves. The first system has a dashed vertical line on the left. The second system has a large "SAMPLE" watermark. The third, fourth, and fifth systems each have a first ending (1) and a second ending (2) marked "al Fine".

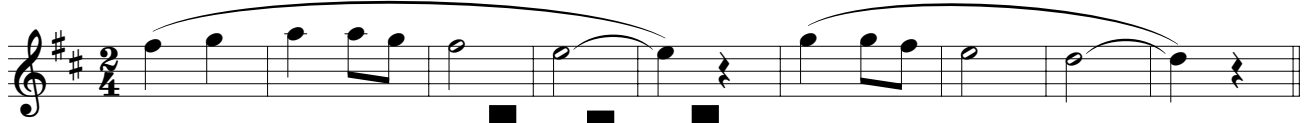
El Señor Nos Invita

70717-Z3

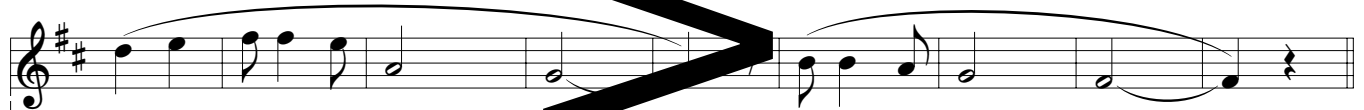
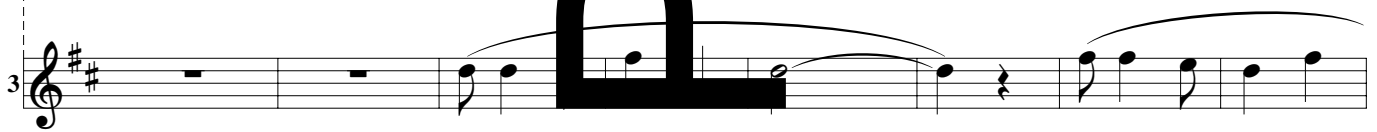
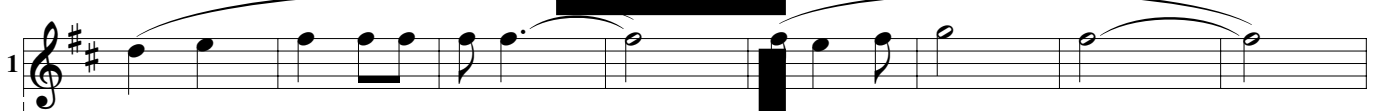
INSTRUMENTO en Sib

Carmelo Erdozain
Teclado de Scott Soper

INTRO (♩ = ca. 56)



ESTROFAS 1-4



© 2003, 2007 Carmelo Erdozain Gil. Todos los derechos reservados.
Administradora exclusiva en Estados Unidos y Canadá: OCP, 5006 NE Hassalo, Portland, OR 97213.

Nota: Se puede tocar cualquiera de las tres melodías de las estrofas cambiando libremente entre ellas.
Si hay más de un instrumento, las melodías se pueden tocar juntas.

The image displays a musical score for the piece 'El Señor nos invita' in G major. The score is presented in three systems, each containing three staves. The first staff of each system is the treble clef, the second is the alto clef, and the third is the bass clef. The music is written in a key signature of one sharp (F#) and a common time signature. The score includes various musical notations such as notes, rests, and slurs. A large, bold, black watermark reading 'SAMPLE' is oriented vertically across the center of the page, partially obscuring the musical notation. The score concludes with first and second endings in each system, with the second ending marked 'al § (Fin)'. The first ending of the first system is marked with a '1' and a repeat sign, leading to the second ending. The second ending of the first system is marked with a '2' and 'al § (Fin)'. The second ending of the second system is marked with a '1' and a repeat sign, leading to the second ending. The second ending of the second system is marked with a '2' and 'al § (Fin)'. The second ending of the third system is marked with a '1' and a repeat sign, leading to the second ending. The second ending of the third system is marked with a '2' and 'al § (Fin)'. The score is enclosed in a dashed box on the left side.