

A WOMAN MOST HOLY

Verses 1, 3: Traditional English, alt.
Verses 2, 4: Delores Dufner, OSB

Traditional English Carol
Arranged by Christine Manderfeld, OSB

INTRO (♩ = ca. 96)

Organ

§ VERSES 1, 3: Unison Choir

1. A wom - an most ho - ly the proph - ets fore - told,
3. And God sent an an - gel from heav - en to earth

8va

1. would bring forth a Sav - ior, whom now we be - hold,
3. to tell hum - ble shep - herds good news of this birth,

loco

Text of verses 2 and 4 and music arrangement © 2006, Sisters of St. Benedict.
Published by OCP, 5536 NE Hassalo, Portland, OR 97213. All rights reserved.

1. to be our Re - deem - er from death, hell, and sin,
 3. to tell them no long - er in sor - row to stay,

8va

1. which Ad - am's trans - gres - sion had wrapped us in.
 3. for Je - sus the Sav - ior was born on this day.

loco

REFRAIN

Re - joice and be mer - ry, set sor - row a - side;

8va

Christ Je - sus, our Sav - ior, was born on this tide!

VERSES 2, 4 *a cappella*

Soprano I

Soprano II

Alto I

Alto II

2. When Ma - ry gave birth on that most ho - ly morn,
4. A host of bright an - gels filled shep - herds with fright,

2. the King of all kings in a sta - ble was born.
4. and they were a - mazed at the glo - rious sight:

2. The cat - tle stood near to the man - ger, his bed,
4. the heav - en - ly cho - rus that sang at Christ's birth,

2. and gave of their straw, then, to pil - low his head.
4. "To God be the glo - ry and peace be to earth!"

REFRAIN

Re - joice and be mer - ry, set sor - row a - side;

Christ Je - sus, our Sav - ior, was born on this tide!

1. to Interlude
2. to Coda

1 (Interlude) D.S.

2 (Coda)

OF THE FATHER'S LOVE BEGOTTEN

CORDE NATUS EX PARENTIS

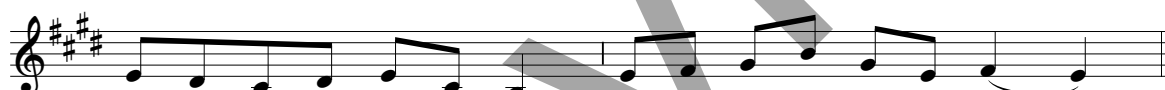
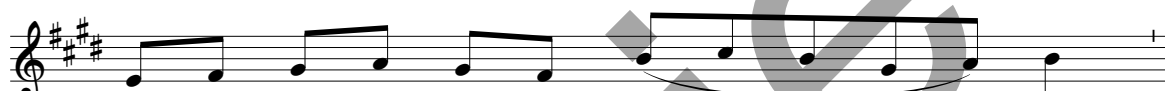
Aurelius Clemens Prudentius, 348-413

tr. John Mason Neale, 1818-1866, *et al.*

DIVINUM MYSTERIUM, 87 87 877

Arranged by Christine Manderfeld, OSB

VERSE 1 (♩ = ca. 80) *a cappella, sustained*



§ VERSES 2, 4

Soprano I



4. O ye heights of heav'n, a - dore ___ him; an - gel hosts, his prais - es sing.

Soprano II



Alto



Music arrangement © 2006, Sisters of St. Benedict. Published by OCP, 5536 NE Hassalo, Portland, OR 97213. All rights reserved.

2. by the Spir - it blest con - ceiv - ing, bore the Sav - ior of ___ our race,
4. All do - min - ions, bow be - fore ___ him, and ex - tol our God ___ and King.

2. and the Child, the world's Re - deem - er
4. Let no tongue on earth be si - lent;

2. first re - vealed his sa - cred face, ev - er - more and ev - er - more. _____
4. ev - 'ry voice in con - cert ring ev - er - more and ev - er - more. _____

VERSES 3, 5

C Instrument (Verse 5 only)

Handbells (Verses 3, 5) G#4 – F#6

Unison Choir

3. This is Christ, whom seers in old time chant-ed of with one ac-cord,
 5. Glo-ry be to God the Fa-ther, glo-ry be to God the Son,

Organ

3. whom the voic-es of the proph-ets prom-ised in their faith-ful word;
 5. glo-ry to the Ho-ly Spir-it, Per-sons three, yet God-head one.

3. now he shines, the long - ex - spect - ed;
 5. Glo - ry be from all cre - a - tion,

3. let cre - a - tion praise the Lord ev - er - more and ev - er - more. _____
 5. while e - ter - nal ag - es run, ev - er - more and ev - er - more. _____

D.S.
(Fine)

D.S.
(Fine)

D.S.
(Fine)

D.S.
(Fine)

ON CHRISTMAS NIGHT

Traditional English
Adapted by Delores Dufner, OSB

SUSSEX CAROL, 88 88 88
Arranged by Christine Manderfeld, OSB

INTRO (♩. = 75-80)

Organ

The organ introduction consists of two systems of music. The first system is in 9/4 time and features a treble clef with a key signature of one flat (Bb) and a bass clef with a key signature of two flats (Bb, Eb). The melody in the treble clef begins with a dotted half note, followed by quarter notes. The bass clef accompaniment uses chords and single notes. The second system is in 6/4 time, continuing the melody and accompaniment.

VERSE 1: Unison

1. On Christ - mas night all Chris - tians sing to hear the news — the

The first line of the verse features a vocal melody in the treble clef and piano accompaniment in the grand staff. The lyrics are: "1. On Christ - mas night all Chris - tians sing to hear the news — the". The music is in 9/4 time with a key signature of one flat.

1. an - gels bring. On Christ - mas night all Chris - tians sing to hear the news — the

The second line of the verse continues the vocal melody and piano accompaniment. The lyrics are: "1. an - gels bring. On Christ - mas night all Chris - tians sing to hear the news — the".

1. an - gels bring: News, joy - ful news — of hope — and mirth,

The third line of the verse concludes the vocal melody and piano accompaniment. The lyrics are: "1. an - gels bring: News, joy - ful news — of hope — and mirth,". The piece ends with a final cadence in 9/4 time.

1. news of our Sav - ior Je - sus' birth.

VERSE 2

Soprano

2. From out of dark - ness we ___ have light, which made the an - gels sing this night. From

Alto

2. out of dark - ness we ___ have light, which made the an - gels sing this night.

2. "Glo - ry to God _____ and peace _____ on earth!"

The first system consists of three staves. The top two staves are vocal lines in G major, 9/4 time, with lyrics. The bottom two staves are piano accompaniment, with a bass line featuring a long note and a treble line with chords.

2. Let all _____ be glad at Je - sus' birth!" _____

The second system consists of three staves. The top two staves are vocal lines in G major, 9/4 time, with lyrics. The bottom two staves are piano accompaniment, with a bass line and a treble line with chords. The system ends with a key signature change to A major.

INTERLUDE

The interlude consists of two staves for piano accompaniment in A major, 9/4 time. The treble staff has chords and a melodic line, while the bass staff has a simple bass line.

VERSE 3: a cappella

Soprano I

Soprano II

3. When sin de - parts be - fore ___ his grace, then life and health ___ come

Alto

3. in ___ its place. When sin de - parts be - fore ___ his grace, then life and health ___ come

3. in ___ its place. An - gels and peo - ple joy - ous - ly sing

3. all for to see the new - born King. _____

VERSE 4

Handbells G4 - G6

Handbells G4 - G6

Soprano

4. For why should we on earth___ be sad, since Christ has come___ to

Alto

Handbells G4 - G6

Soprano

4. make us glad? For why should we on earth___ be sad, since Christ has come___ to

Alto

4. make us glad? Je - sus has won our lib - er - ty,

This system contains the first musical system. It includes a piano introduction with a treble and bass clef, followed by two vocal staves (Soprano and Alto) and a piano accompaniment. The key signature is one sharp (F#) and the time signature is 9/4. The lyrics are: "4. make us glad? Je - sus has won our lib - er - ty,". The piano accompaniment features a steady bass line and chords in the right hand.

4. let us praise God e - ter - nal - ly!

This system contains the second musical system. It includes a piano introduction with a treble and bass clef, followed by two vocal staves (Soprano and Alto) and a piano accompaniment. The key signature is one sharp (F#). The time signature changes from 9/4 to 6/4 and then to 8/4. The lyrics are: "4. let us praise God e - ter - nal - ly!". The piano accompaniment features a steady bass line and chords in the right hand.