

# ASHES

Melody

Keyboard

1. We rise a-gain from ash - es, from the good we've failed to  
 2. We of - fer you our fail - ures, we \_\_\_ of - fer you at -  
 3. Then rise a-gain from ash - es, let \_\_\_ heal - ing come to  
 4. † Thanks be to the Fa - ther, who \_\_\_ made us like him -

Chords: Eb Eb/D Cm Cm/Bb Ab F

1. do. We rise a - gain from ash - es, to cre -  
 2. tempts, the gifts not ful - ly giv - en, the \_\_\_  
 3. pain, though spring has turned to win - ter, and \_\_\_  
 4. self. † Thanks be to his Son, \_\_\_ who \_\_\_

Chords: Bb Eb Eb/D Cm Cm/Bb

Text: Tom Conry, b. 1951.  
 Music: Tom Conry; keyboard acc. by Michael Joncas, b. 1951.  
 Text and music © 1978, OCP. All rights reserved.

Db Fm Bbsus4 Bb Gm

1. ate our - selves a - new. If all our world is  
 2. dreams not ful - ly dreamt. Give our stum - bl - ings di -  
 3. sun - shine turned to rain. The rain we'll use for  
 4. saved us by his death. Thanks be to the

Cm Ab Bb Cm Ab Bb

1. ash - es, then must our lives be true, an of - fer - ing of  
 2. rec - tion, give our vi - sions wid - er view, an of - fer - ing of  
 3. grow - ing, and cre - ate the world a - new from an of - fer - ing of  
 4. Spir - it who cre - ates the world a - new from an of - fer - ing of

Gm Cm Ab Bbsus4 1-3 Eb D.C. Final Eb

1-4. ash - es, an of - fer - ing to you. 4. you. \_\_\_\_\_

1-3 D.C. Final

# ASHES

Capo 3: (C) Eb (C/B) Eb/D (Am) Cm (Am/G) Cm/Bb (F) Ab (D) F



1. We rise a - gain from ash - es, \_\_\_ from the good we've failed to  
 2. We of - fer you our fail - ures, \_\_\_ we \_\_\_ of - fer you at -  
 3. Then rise a - gain from ash - es, \_\_\_ let \_\_\_ heal - ing come to  
 4. † Thanks be to the Fa - ther, \_\_\_ who \_\_\_ made us like him -

(G) Bb (C) Eb (C/B) Eb/D (Am) Cm (Am/G) Cm/Bb



1. do. We rise a - gain from ash - es, \_\_\_ to cre -  
 2. tempts, the gifts not ful - ly giv - en, \_\_\_ the \_\_\_  
 3. pain, though spring has turned to win - ter, \_\_\_ and \_\_\_  
 4. self. † Thanks be to his Son, \_\_\_ who \_\_\_

(Bb) Db (Dm) Fm (Gsus4) Bbsus4 (G) Bb (Em) Gm



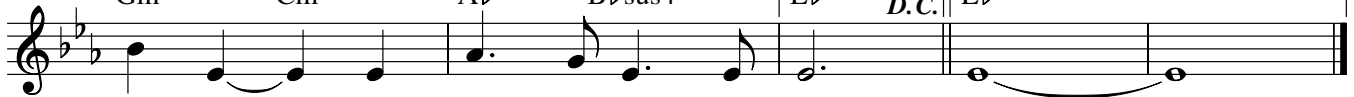
1. ate our - selves a - new. \_\_\_ If \_\_\_ all our world is  
 2. dreams not ful - ly dreamt. \_\_\_ Give our stum - bl - ings di -  
 3. sun - shine turned to rain. \_\_\_ The \_\_\_ rain we'll use for the  
 4. saved us by his death. \_\_\_ † Thanks be to the

(Am) Cm (F) Ab (G) Bb (Am) Cm (F) Ab (G) Bb



1. ash - es, then \_\_\_ must our lives be true, an \_\_\_ of - fer - ing of  
 2. rec - tion, give our vi - sions wid - er view, an \_\_\_ of - fer - ing of  
 3. grow - ing, and cre - ate the world a - new from an of - fer - ing of  
 4. Spir - it who cre - ates the world a - new from an of - fer - ing of

(Em) Gm (Am) Cm (F) Ab (Gsus4) Bbsus4



1-4. ash - es, \_\_\_ an of - fer - ing to you. you. \_\_\_

1-3 (C) Eb	D.C.	Final (C) Eb
------------------	------	--------------------

# ASHES

Capo 3: (C) Eb (C/B) Eb/D (Am) Cm (Am/G) Cm/Bb (F) Ab (D) F



1. We rise a - gain from ash - es, \_\_\_ from the good we've failed to  
 2. We of - fer you our fail - ures, \_\_\_ we \_\_\_ of - fer you at -  
 3. Then rise a - gain from ash - es, \_\_\_ let \_\_\_ heal - ing come to  
 4. † Thanks be to the Fa - ther, \_\_\_ who \_\_\_ made us like him -

(G) Bb (C) Eb (C/B) Eb/D (Am) Cm (Am/G) Cm/Bb



1. do. We rise a - gain from ash - es, \_\_\_ to cre -  
 2. tempts, the gifts not ful - ly giv - en, \_\_\_ the \_\_\_  
 3. pain, though spring has turned to win - ter, \_\_\_ and \_\_\_  
 4. self. † Thanks be to his Son, \_\_\_ who \_\_\_

(Bb) Db (Dm) Fm (Gsus4) Bbsus4 (G) Bb (Em) Gm



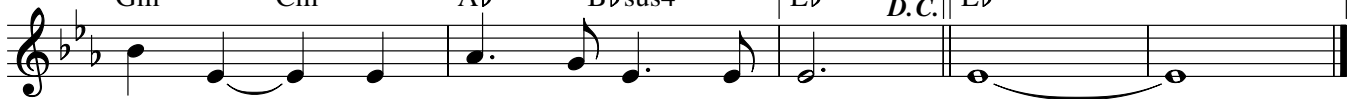
1. ate our - selves a - new. \_\_\_ If \_\_\_ all our world is  
 2. dreams not ful - ly dreamt. \_\_\_ Give our stum - bl - ings di -  
 3. sun - shine turned to rain. \_\_\_ The \_\_\_ rain we'll use for  
 4. saved us by his death. \_\_\_ † Thanks be to the

(Am) Cm (F) Ab (G) Bb (Am) Cm (F) Ab (G) Bb



1. ash - es, then \_\_\_ must our lives be true, an \_\_\_ of - fer - ing of  
 2. rec - tion, give our vi - sions wid - er view, an \_\_\_ of - fer - ing of  
 3. grow - ing, and cre - ate the world a - new from an of - fer - ing of  
 4. Spir - it who cre - ates the world a - new from an of - fer - ing of

(Em) Gm (Am) Cm (F) Ab (Gsus4) Bbsus4



1-4. ash - es, \_\_\_ an of - fer - ing to you. you. \_\_\_

1-3  
(C) Eb D.C.

Final  
(C) Eb

# ASHES

SOLO INSTRUMENT I & II

The musical score for 'ASHES' is written for two solo instruments, I and II. The key signature is two flats (B-flat and E-flat), and the time signature is 4/4. The score is divided into four systems. The first system shows the initial entry of both instruments. The second and third systems continue the melodic and harmonic development. The fourth system concludes with a first ending marked '1-3', a double bar line, and a 'D.C.' (Da Capo) instruction. The final section is marked 'Final' and features a long, sustained note in both staves.

Music: Tom Conry, b. 1951, © 1978, OCP. All rights reserved.