

# BECAUSE OF JESUS

INTRO (♩ = ca. 80)

Ab Eb/G Db/F Bbm Ab/C Db Eb Absus4 Ab

Keyboard

REFRAIN

Ab Eb/G Db/F Bbm Cm Db Ab/Eb Ebsus2 Eb

Je-sus came to bring God's heal-ing touch to heal a wound-ed world.

Ab Eb/G Db/F Bbm Ab/C Db Eb Absus4 Ab *Fine*

An-y-one who reach-es out to him will know God's heal-ing love. *Fine*

Text: Barbara Bridge, b. 1950.

Music: Barbara Bridge; keyboard acc. by Frank Alleruzzo.

Text and music © 1992, Barbara Bridge. Published by OCP Publications. All rights reserved.

VERSES

Fm Cm D $\flat$  Fm Cm

1. Be-cause of Je - sus the blind have seen. Be - cause of Je - sus the  
 2. Be-cause of Je - sus the crip - pled walk. Be - cause of Je - sus the  
 3. Be-cause of Je - sus the king - dom comes. He speaks of jus - tice, he

D $\flat$  E $\flat$  Fm Cm B $\flat$ m

1. deaf have heard. Be - cause of Je - sus the sin - ner is for -  
 2. sick are healed. Be - cause of Je - sus the dead are brought to  
 3. speaks of love. His word is pow - er: the wind and sea o -

E $\flat$  Fm B $\flat$ m Ebsus4 E $\flat$  D.S.

1. giv - en, the mer - cy of God is made known.  
 2. new life, God's pow - er and love are made known.  
 3. bey him. He gives us the gos - pel of peace.

D.S.

# BECAUSE OF JESUS

INTRO (♩ = ca. 80)

Capo 1: (G)

(D/F#)

(C/E)

(Am)

(G/B)

(C)

(D)

(Gsus4)

(G)

Ab Eb/G Db/F Bbm Ab/C Db Eb Absus4 Ab



## REFRAIN

(G)

(D/F#)

(C/E)

(Am)

(Bm)

(C)

(G/D)

(Dsus2)

(D)

Ab Eb/G Db/F Bbm Cm Db Ab/Eb Ebsus2 Eb



Je - sus came to bring God's heal - ing touch to heal a wound - ed world.

(G)

(D/F#)

(C/E)

(Am)

(G/B)

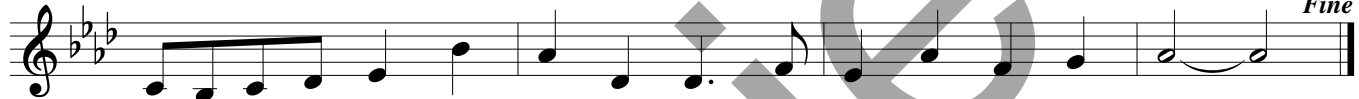
(C)

(D)

(Gsus4)

(G)

Ab Eb/G Db/F Bbm Ab/C Db Eb Absus4 Ab *Fine*



An - y - one who reach - es out to him will know God's heal - ing love.

## VERSES

(Em)

(Bm)

(C)

(Em)

(Bm)

Fm Cm Db Fm Cm



1. Be - cause of Je - sus the blind have seen. Be - cause of Je - sus the  
 2. Be - cause of Je - sus the crip - pled walk. Be - cause of Je - sus the  
 3. Be - cause of Je - sus the king - dom comes. He speaks of jus - tice, he

(C)

(D)

(Em)

(Bm)

(Am)

Db Eb Fm Cm Bbm



1. deaf have heard. Be - cause of Je - sus the sin - ner is for -  
 2. sick are healed. Be - cause of Je - sus the dead are brought to  
 3. speaks of love. His word is pow - er: the wind and sea o -

(D)

(Em)

(Am)

(Dsus4)

(D)

Eb Fm Bbm Ebsus4 Eb *D.S.*



1. giv - en, the mer - cy of God is made known.  
 2. new life, God's pow - er and love are made known.  
 3. bey him. He gives us the gos - pel of peace.

# BECAUSE OF JESUS

INTRO (♩ = ca. 80)

Capo 1: (G)

(D/F#)

(C/E)

(Am)

(G/B)

(C)

(D)

(Gsus4)

(G)

Ab Eb/G Db/F Bbm Ab/C Db Eb Absus4 Ab



## REFRAIN

(G)

(D/F#)

(C/E)

(Am)

(Bm)

(C)

(G/D)

(Dsus2)

(D)

Ab Eb/G Db/F Bbm Cm Db Ab/Eb Ebsus2 Eb



Je - sus came to bring God's heal - ing touch to heal a wound - ed world.

(G)

(D/F#)

(C/E)

(Am)

(G/B)

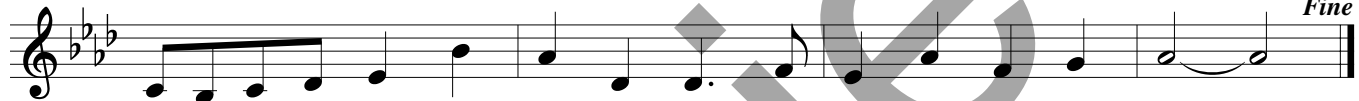
(C)

(D)

(Gsus4)

(G)

Ab Eb/G Db/F Bbm Ab/C Db Eb Absus4 Ab *Fine*



An - y - one who reach - es out to him will know God's heal - ing love.

## VERSES

(Em)

(Bm)

(C)

(Em)

(Bm)

Fm Cm Db Fm Cm



1. Be - cause of Je - sus the blind have seen. Be - cause of Je - sus the  
 2. Be - cause of Je - sus the crip - pled walk. Be - cause of Je - sus the  
 3. Be - cause of Je - sus the king - dom comes. He speaks of jus - tice, he

(C)

(D)

(Em)

(Bm)

(Am)

Db Eb Fm Cm Bbm



1. deaf have heard. Be - cause of Je - sus the sin - ner is for -  
 2. sick are healed. Be - cause of Je - sus the dead are brought to  
 3. speaks of love. His word is pow - er: the wind and sea o -

(D)

(Em)

(Am)

(Dsus4)

(D)

Eb Fm Bbm Ebsus4 Eb *D.S.*

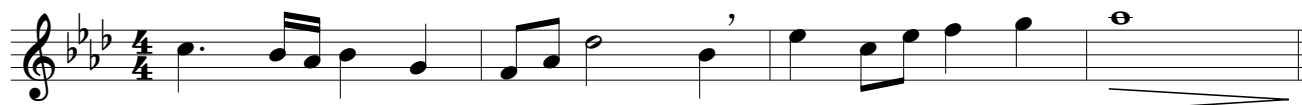


1. giv - en, the mer - cy of God is made known.  
 2. new life, God's pow - er and love are made known.  
 3. bey him. He gives us the gos - pel of peace.

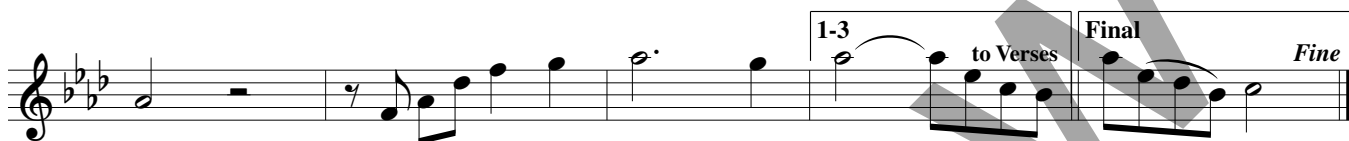
# BECAUSE OF JESUS

SOLO INSTRUMENT

INTRO (♩ = ca. 80)



REFRAIN: Tacet until after Verse 2



VERSE 1: Tacet  
VERSES 2, 3



Music: Barbara Bridge, b. 1950; arr. by Dominic MacAller, b. 1959, © 1992, Barbara Bridge. Published by OCP Publications. All rights reserved.