

Simon, Son of John

Bob Hurd

Choral arrangement by Craig Kingsbury

Keyboard accompaniment by Rick Modlin

Based on John 21:1–19

INTRO (♩ = ca. 63)

D Asus4 D Bm F#m

Keyboard

The introduction consists of five measures of music in D major, 2/4 time. The first measure has a D chord. The second measure has an Asus4 chord. The third measure has a D chord. The fourth measure has a Bm chord. The fifth measure has an F#m chord. The melody is in the treble clef, and the accompaniment is in the bass clef.

G6 Dmaj7/F# Bm Bm/A Gmaj7 Asus4 A D

This section continues the keyboard accompaniment with seven measures. The chords are G6, Dmaj7/F#, Bm, Bm/A, Gmaj7, Asus4, A, and D. The melody continues in the treble clef, and the accompaniment continues in the bass clef.

REFRAIN
Soprano

Alto

Tenor

Bass

Si - mon, son of John, do you love me more than these?

The refrain is for four voices: Soprano, Alto, Tenor, and Bass. The lyrics are "Si - mon, son of John, do you love me more than these?". The music is in D major, 2/4 time, and consists of four measures. The vocal lines are written in treble clef for Soprano and Alto, and bass clef for Tenor and Bass.

D Asus4 D Bm F#m

The keyboard accompaniment for the refrain consists of five measures. The chords are D, Asus4, D, Bm, and F#m. The melody is in the treble clef, and the accompaniment is in the bass clef.

© 2006, Bob Hurd. Published by OCP, 5536 NE Hassalo, Portland, OR 97213. All rights reserved.

Parts for Oboe and Cello are available online, edition 70502-Z3. Please visit ocp.org

SIMON, SON OF JOHN (Keyboard/Choral), cont. (2)

1-6 to Verses

Si - mon, son of John, do you love me more than these?

1-6 to Verses

G6 Dmaj7/F# Bm Bm/A Gmaj7 Asus4 A D

Final

these? Si - mon, son of John, do you love me more than these?

rit. *Fine*

Final

D G6 Dmaj7/F# Bm Bm/A Gmaj7 Asus4 A D

rit. *Fine*

SIMON, SON OF JOHN (Keyboard/Choral), cont. (3)

VERSES

1. The night was spent, the dawn drew near, their
 2. "Now cast your net o'er the right side," and
 3. "Now bring some fish and share with me this
 4. "O Si - mon, do you love me?" "Yes,
 5. "When you were young you came and went and
 6. Thus Christ fore - told how Pe - ter's death would

Bm F#m/B Em/B F#m/B

1. fish - ing all for naught, when Christ the Lord ap -
 2. they o - beyed the Lord. They filled it to the
 3. meal I have pre - pared." And once a - gain they
 4. Lord, you know I do." "Then feed my lambs,
 5. did just as you pleased. When you are old they'll
 6. glo - ri - fy God. So may we like - wise

Em7 G/A D A D/F#

SIMON, SON OF JOHN (Keyboard/Choral), cont. (4)

D.S.

1. peared to them up - on Ti - be - rias' shore.
2. break - ing point and still it was not torn.
3. knew him in the break - ing of the bread.
4. tend my sheep and show your love is true."
5. take your hands and stretch you on a tree."
6. fol - low him by fol - low - ing his Lord.

D.S.

G Em C G/B Asus4 A Gmaj7/A A7

Simon, Son of John

(Guitar/Vocal)

Based on John 21:1-19

Bob Hurd

INTRO (♩ = ca. 63)

D Asus4 D Bm F#m

(Keyboard)

G6 Dmaj7/F# Bm Bm/A Gmaj7 Asus4 A D

REFRAIN

D Asus4 D Bm F#m

Si - mon, son of John, do you love me more than these?

G6 Dmaj7/F# Bm Bm/A Gmaj7 Asus4 A

Si - mon, son of John, do you love me more than these?

1-6
D to Verses

Final
D G6 Dmaj7/F# Bm Bm/A Gmaj7 *rit.* Asus4 A D *Fine*

these? Si - mon, son of John, do you love me more than these?

VERSES

Bm F#m/B Em/B F#m/B

1. The night was spent, the dawn drew near, their
2. "Now cast your net o'er the right side," and
3. "Now bring some fish and share with me this
4. "O Si - mon, do you love _____ me?" "Yes,
5. "When you were young you came and went and
6. Thus Christ fore - told how Pe - ter's death would

SIMON, SON OF JOHN (Guitar/Vocal), cont. (2)

Em7 G/A D A D/F#

1. fish - ing all for naught, when Christ the Lord ap -
2. they o - beyed the Lord. They filled it to the
3. meal I have pre - pared." And once a - gain they
4. Lord, you know I do." "Then feed my lambs, _____
5. did just as you pleased. When you are old they'll
6. glo - ri - fy _____ God. So may we like - wise

G Em C G/B Asus4 A *Gmaj7/A *A7 D.S.

1. peared to them up - on Ti - be - rias' shore. _____
2. break - ing point and still it was not torn. _____
3. knew him in the break - ing of the bread. _____
4. tend my sheep and show your love is true." _____
5. take your hands and stretch you on a tree." _____
6. fol - low him by fol - low - ing his Lord. _____

G6

F#m/B

Em/B

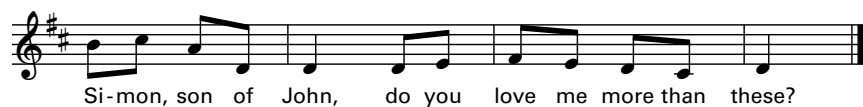
*Gmaj7/A

*A7

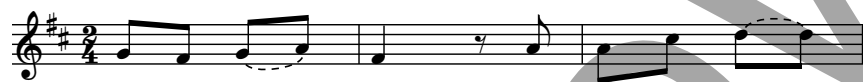
Assembly Editions

SIMON, SON OF JOHN

Bob Hurd



1. The night was spent, the dawn drew near, their
2. "Now cast your net o'er the right side," and
3. "Now bring some fish and share with me this
4. "O Si - mon, do you love me?" "Yes,
5. "When you were young you came and went and
6. Thus Christ fore - told how Pe - ter's death would



2. they o - beyed the Lord. They filled it to the
3. meal I have pre - pared." And once a - gain they
4. Lord, you know I do." "Then feed my lambs, —
5. did just as you pleased. When you are old they'll
6. glo - ri - fy — God. So may we like - wise



1. peared to them up - on Ti - be - rias' shore.
2. break - ing point and still it was not torn.
3. knew him in the break - ing of the bread.
4. tend my sheep and show your love is true."
5. take your hands and stretch you on a tree."
6. fol - low him by fol - low - ing his Lord.

Text: Based on John 21:1-19. Text and music © 2006, Bob Hurd.
Published by OCP, 5536 NE Hassalo, Portland, OR 97213. All rights reserved.

For reprint permissions, please visit OneLicense.net or contact us at 1-800-663-1501.