

# Como Tú, María

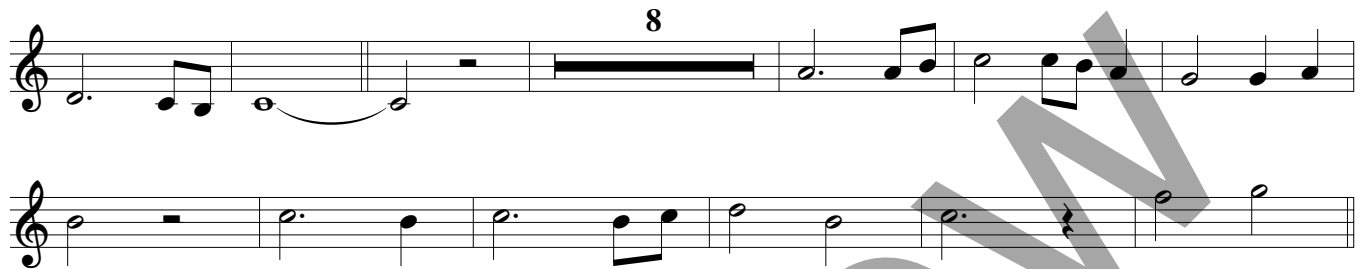
INSTRUMENTO en Do

Albert Coppo

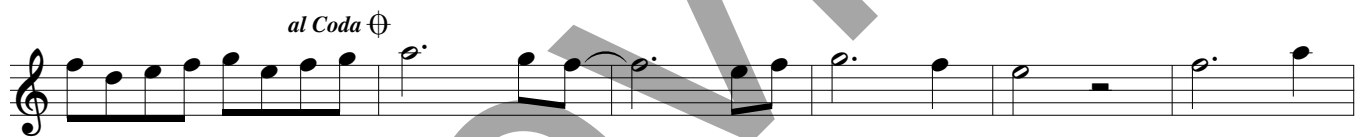
INTRO (♩ = ca. 68)



## ESTROFA 1



## ESTRIBILLO



## ESTROFA 2



© 2011, 2015, Albert Coppo. Obra publicada por OCP, 5536 NE Hassalo, Portland, OR 97213. Derechos reservados.

Utilice esta partitura con el acompañamiento de teclado y guitarra de la colección *El Señor Nos Invita, Vol. 2*, edición 30134136.

PUENTE

The Bridge section consists of three staves of music. The first staff features a series of eighth notes with accents (>) on the first, second, and fourth notes of each pair, followed by a quarter note and a dotted quarter note. The second and third staves continue the melodic line with various note values, including quarter notes, eighth notes, and dotted notes, some with slurs and accidentals (sharps).

⊕ CODA

The Coda section consists of two staves of music. The first staff begins with a quarter note, followed by a series of quarter notes and eighth notes. The second staff continues the melody with quarter notes and eighth notes, some with slurs, ending with a double bar line.

# Como Tú, María

INSTRUMENTO en Sib

Albert Coppo

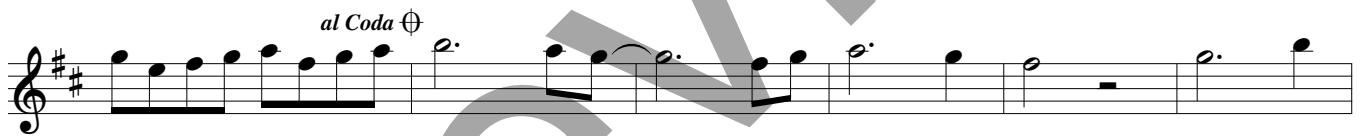
INTRO (♩ = ca. 68)



ESTROFA 1



ESTRIBILLO



ESTROFA 2



© 2011, 2015, Albert Coppo. Obra publicada por OCP, 5536 NE Hassalo, Portland, OR 97213. Derechos reservados.

Utilice esta partitura con el acompañamiento de teclado y guitarra de la colección *El Señor Nos Invita*, Vol. 2, edición 30134136.

PUENTE

⊕ CODA