

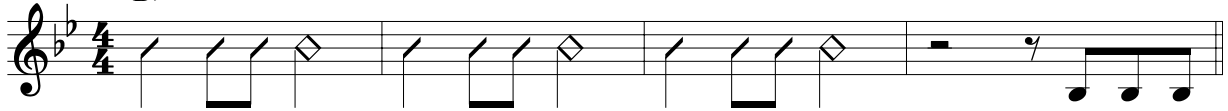
# Be with Us, Mary

Refrain attributed to Mother Teresa of Calcutta, 1910–1997  
Verse by Jenny Pixler and Tom Booth

Jenny Pixler

**INTRO** *Simply* (♩ = ca. 60)

Capo 3: (G)  
B♭



Be with us,

## REFRAIN/VERSE

(G)  
B♭

(C/G) (G)  
Eb/B♭ B♭



**Refrain** Ma - ry, a - long the way. Guide us ev - 'ry step we  
**Verse** jour - ney, we stray, we fall. Some - times we're emp - ty no strength at

(D)  
F

(G)  
B♭

(Am) (Bm) (C)  
Cm Dm Eb

(Bm) (Am)  
Dm Cm



take. Lead us to Je - sus, your lov - ing son. Come with us,  
all. O Ho - ly Moth - er, come take my hand. Bring me to

(C/G) (G)  
Eb/B♭ B♭

(D)  
F  
to Coda ⊕

1 (G)  
B♭

*D.S.*

2 (G)  
B♭



Ma - ry; please, with us come. Oh, on this  
heav - en, the prom - ised land.

## INTERLUDE

(G)  
B♭

(C/G) (G)  
Eb/B♭ B♭

(D)  
F

(G)  
B♭



(Kbd)

(Am) (Bm) (C)  
Cm Dm Eb

(Bm) (Am) (C/G) (G)  
Dm Cm Eb/B♭ B♭

(D)  
F

(G)  
B♭

*D.S. al Coda*



Be with us,

Verse text © 2003, Jenny Pixler and Tom Booth. Music © 2003, Jenny Pixler. Published by Spirit & Song®, a division of OCP. All rights reserved.

⊕ CODA

(G) (C) (Bm) (Am) (C/G) (G) (D)  
Bb Eb Dm Cm Eb/Bb Bb F

come. Come with us, Ma - ry; please with us

(G) (D/G) (G)  
Bb F/Bb Bb

come.

Preview