

Choral Series

Behold the Wood

Assembly, SATB Choir and Organ, SAB Choir and Guitar

Based on Good Friday Liturgy and
John 12:24, 32; 15:13

Dan Schutte

INTRO: *With feeling* (♩ = 76)

Organ

REFRAIN: SATB Choir

Soprano *mp* (*a tempo*)
Alto
Tenor *mp*
Bass

Be - hold, — be - hold — the wood — of the

© 1976, OCP, 5536 NE Hassalo, Portland, OR 97213. All rights reserved.

Organ accompaniment is not parallel with guitar accompaniment.

MUSIC · WORSHIP · SERVICE

1.800.548.8749

ocp.org



cross, — on which is hung — our sal -

mf

mf

mf

This system contains the first two systems of music. The top system shows the vocal line in treble clef and the piano accompaniment in bass clef. The vocal line has lyrics "cross, — on which is hung — our sal -" and a dynamic marking of *mf*. The piano accompaniment also has a dynamic marking of *mf*. The second system continues the vocal line and piano accompaniment, with a dynamic marking of *mf* in the piano part.

va - tion. — O come, — let

mp

mp

mp

This system contains the last two systems of music. The top system shows the vocal line in treble clef and the piano accompaniment in bass clef. The vocal line has lyrics "va - tion. — O come, — let" and a dynamic marking of *mp*. The piano accompaniment also has a dynamic marking of *mp*. The second system continues the vocal line and piano accompaniment, with a dynamic marking of *mp* in the piano part.

1-3 to Verses

us a - dore.

1-3 to Verses

(b) (b)

Final Fine

Final Fine

rit. *molto rit.*

VERSES: Two-Part Choir

Melody

mp

1. Un - less a grain of wheat shall fall up -
 2. And when my hour of glo - ry comes as
 3. For there can be no great - er love
 4. My Fa - ther, if it be your plan, this
 5. For sure - ly he has borne our tears, is
 6. My bod - y now is torn with pain, my

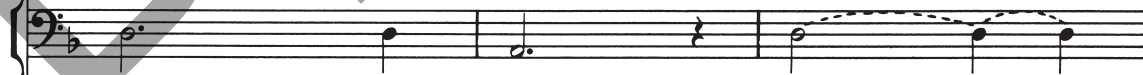
Harmony

mp

1. Let _____ wheat _____
 2. When _____ glo - ry _____
 3. Care _____ no great - er _____
 4. Fa - ther be our _____
 5. He has borne tears _____
 6. Bod - y torn pain _____



1. on the ground and die, it shall re - main but a
 2. all was meant to be, & you shall see me
 3. shown up - on this land than in the one who
 4. cup might pass me by, yet let it hap - pen
 5. wound - ed by our sin, and yet he o - pens
 6. friends have left and gone. O lov - ing Fa - ther,



1. fall and die, shall _____ re -
 2. all to be, you, me _____
 3. shown this land, him _____ who
 4. cup me by, let _____ it
 5. wound our sin, yet not _____
 6. left and gone. Fa - ther



rit. *mf* *D.S.*

1. sin - gle grain and not give life.
 2. lift - ed up up - on a tree.
 3. came to die that we might live.
 4. as you will if I must die.
 5. not his mouth that we might live.
 6. take my life in - to your hands.

rit. *mf* *D.S.*

1. main _____ and not give life.
 2. lift - ed up - on a tree.
 3. came _____ that we might live.
 4. you _____ will if I must die.
 5. his _____ mouth that we might live.
 6. take _____ life in - to your hands.

rit. *mf* *D.S.*

Performance Notes

This is a song of adoration based on the familiar Good Friday antiphon with verses that are derived from the Gospel of John. The mood of the song is one of simple reverence before the mystery of our salvation. The key to creating this mood is to perform the song with simplicity.

The Verses may also be performed by a soloist. They should be sung with much feeling and need not be done in strict timing. The *ritardando* at the end of each Verse is very important for leading into the Refrain.

— *D.S.*

Behold The Wood

(Guitar/Vocal)

Based on Good Friday Liturgy and
John 12:24, 32; 15:13

Dan Schutte

****INTRO: With feeling** (♩=76)

REFRAIN:

p Dm* C Dm *rit.* *mp* Dm *a tempo*

Be - hold, be -

C A Dm Gm7 C

mf hold the wood of the cross, on which is hung our sal -

Dm C A Dm

mp va - tion. O come, let us a - dore.

1-3 Final

to Verses Dm C Dm Am7 Dm *rit.* *molto rit.* *Fine*

rit. *molto rit.* *Fine*

*D tuning suggested

**Guitar accompaniment is not parallel with organ accompaniment.

VERSES:

(Melody) *mp* Dm C Dm Am7

1. Un - less a grain of wheat shall fall up - on the ground and die,
 2. And when my hour of glo - ry comes as all was meant to be,
 3. For there can be no great - er love shown up - on this land
 4. My Fa - ther, if it be your plan, this cup might pass me by,
 5. For sure - ly he has borne our tears, is wound - ed by our sin,
 6. My bod - y now is torn with pain, my friends have left and gone.

(Harmony) *mp*

1. Let wheat fall and die,
 2. When glo - ry all to be,
 3. Care no great - er shown this land,
 4. Fa - ther be our cup me by,
 5. He has borne tears wound our sin,
 6. Bod - y torn pain left and gone.

Dm C Dm Gm6/Bb A7sus4 A *rit.* *mf* *D.S.*

1. it shall re - main but a sin - gle grain and not give life. _____
 2. you shall see me lift - ed up up - on a tree. _____
 3. than in the one who came to die that we might live. _____
 4. yet let it hap - pen as you will if I must die. _____
 5. and yet he o - pens not his mouth that we might live. _____
 6. O lov - ing Fa - ther, take my life in - to your hands. _____

rit. *mf* *D.S.*

1. shall re - main and not give life.
 2. you, me lift - ed up - on a tree.
 3. him who came that we might live.
 4. let it you will if I must die.
 5. yet not his mouth that we might live.
 6. Fa - ther take life in - to your hands.

Guitar Chord Charts

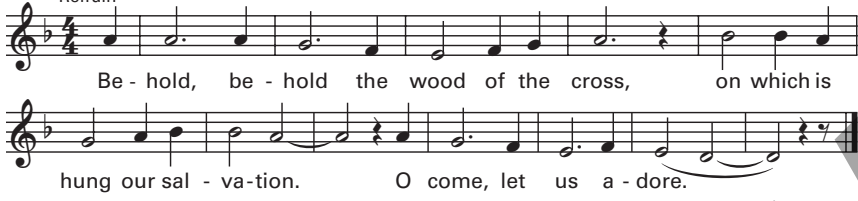
Dm Gm7 Gm6/Bb A7sus4

Assembly Edition

BEHOLD THE WOOD

Dan Schutte

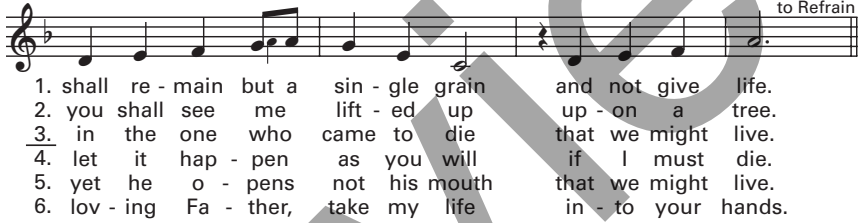
Refrain



Verses

1. Un - less a grain of wheat shall fall up - on the ground and die, it
2. And when my hour of glo - ry comes as all was meant to be, z
3. For there can be no great - er love — shown up - on this land than
4. My Fa - ther, if it be your plan, this cup might pass me by; yet
5. For sure - ly he has borne our tears, is wound - ed by our sin, and
6. My bod - y now is torn with pain, my friends have left and gone. O

to Refrain



Text: Based on *Good Friday Liturgy* and John 12:24, 32; 15:13.
 Text and music © 1976, OCP, 5536 NE Hassalo, Portland, OR 97213. All rights reserved.

For reprint permissions, please visit OneLicense.net or contact us at 1-800-663-1501.